

TACAN RWY 22

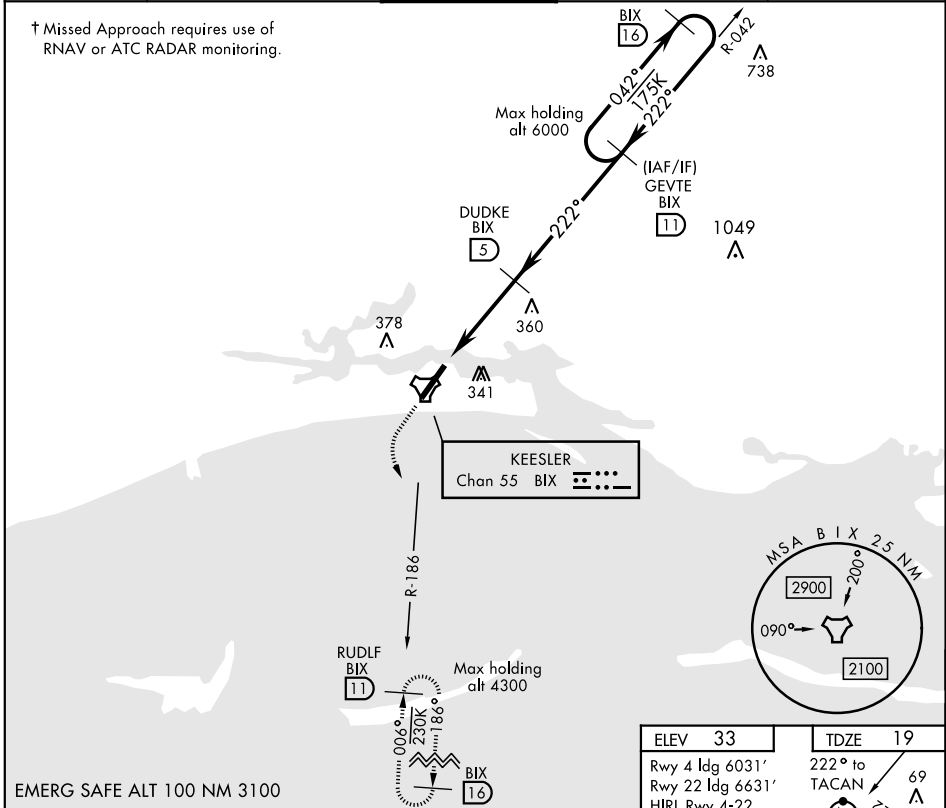
TACAN BIX Chan 55	APCH CRS 222°	Rwy ldg TDZE Arprt Elev 6631 19 33	AL-49 [USAF]	KEESLER AFB (KBIX)
----------------------	-------------------------	--	--------------	--------------------

V * When ALS inop, increase CAT AB RVR to 55, vis to 1 mile; CAT CD vis to 1¾ miles.

 ALSF-1
A1

 † MISSED APPROACH: Climb to 800 tracking 215°, then turn left to intercept BIX R-186 to 11 DME (RUDLF) climbing to 2200 and hold.

ATIS 281.55	GULFPORT APP CON 124.6 354.1 (130°-309°) 127.5 254.25 (310°-129°)	KEESLER TOWER * 120.75 269.075	GND CON 121.8 275.8	CLNC DEL 121.8 275.8
-----------------------	---	--	-------------------------------	--------------------------------



EMERG SAFE ALT 100 NM 3100

800 2200

↑ tr ↙

215° BIX

 R-186

ELEV 33 TDZE 19

Rwy 4 ldg 6031' 222° to TACAN

Rwy 22 ldg 6631' 69

HIRL Rwy 4-22 98

REIL Rwy 4 98

CATEGORY	A	B	C	D
S-22*	640/40	621 (700-¾)	640-1½	621 (700-1½)
CIRCLING	640-1	680-1	700-1¾	700-2
	607 (700-1)	647 (700-1)	667 (700-1¾)	667 (700-2)

BILOXI, MISSISSIPPI

30°25'N-88°55'W

KEESLER AFB (KBIX)

SC-4, 25 FEB 2021 to 25 MAR 2021

SC-4, 25 FEB 2021 to 25 MAR 2021