


WAAS CH <b>45721</b> <b>W23A</b>	APP CRS <b>233°</b>	Rwy Idg TDZE <b>210</b> Apt Elev <b>215</b>	<b>5494</b>
--	------------------------	---	-------------

# RNAV (GPS) RWY 23

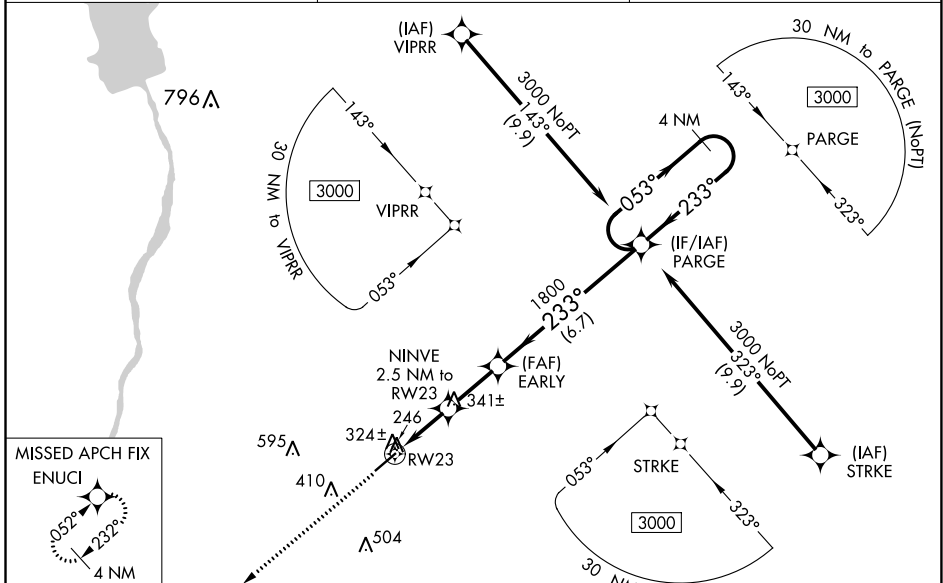
EARLY COUNTY (BIJ)

**⚠** Inop table does not apply to LPV, LNAV/VNAV and LNAV Cat A/B. For uncompensated Baro-VNAV systems, LNAV/VNAV NA below -15°C (5°F) or above 42°C (107°F).  
**⚠** Rwy 5, 23 helicopter visibility reduction below 1 SM NA. DME/DME RNP-0.3 NA.  
 When local altimeter setting not received, use Bainbridge altimeter setting: increase LPV DA to 578 feet, LNAV/VNAV DA to 587 feet; increase all MDAs 80 feet and visibility LNAV Cat C and D 1/2 SM. For inop ALS, increase LNAV Cat C/D visibility to 1 1/8 SM. Baro-VNAV and VDP NA when using Bainbridge altimeter setting.

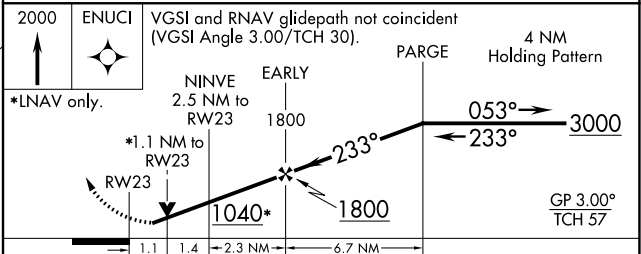
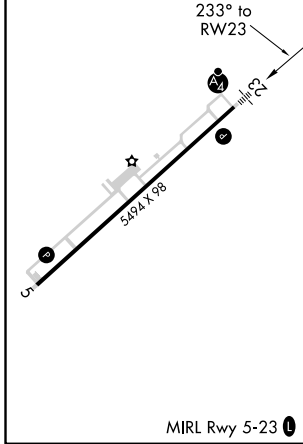
MALSF 

MISSED APPROACH:  
Climb to 2000 direct ENUCI and hold.

AWOS-3PT <b>118.475</b>	CAIRNS APP CON ★ <b>125.4 327.125</b>	CTAF <b>122.9</b> 
----------------------------	--	--



ELEV 215	TDZE 210
----------	----------



CATEGORY	A	B	C	D
LPV DA		501-1	291 (300-1)	
LNAV/VNAV DA		510-1	300 (300-1)	
LNAV MDA		600-1	390 (400-1)	
CIRCLING	720-1	505 (600-1)	720-1 1/2 505 (600-1 1/2)	780-2 565 (600-2)

SE-4, 25 FEB 2021 to 25 MAR 2021

SE-4, 25 FEB 2021 to 25 MAR 2021