

WAAS CH 53442 W35A	APP CRS 351°	Rwy Idg TDZE Apt Elev	6299 3055 3055
--	------------------------	-----------------------------	---

RNAV (GPS) RWY 35

HUTCHINSON COUNTY (B.G.D)

RNP APCH.

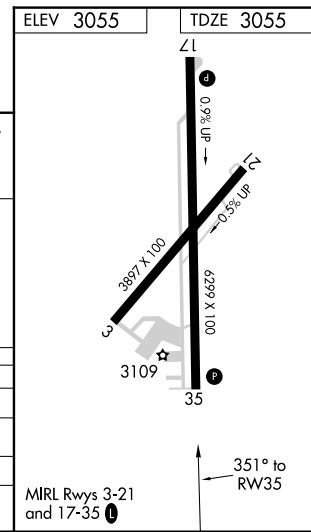
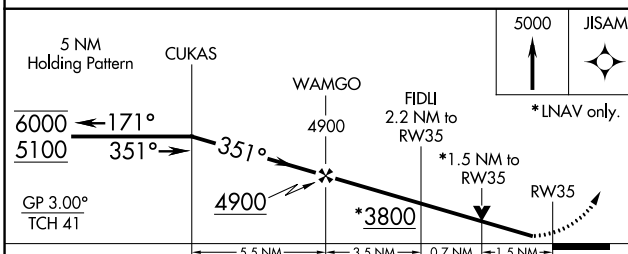
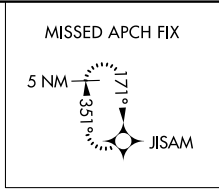
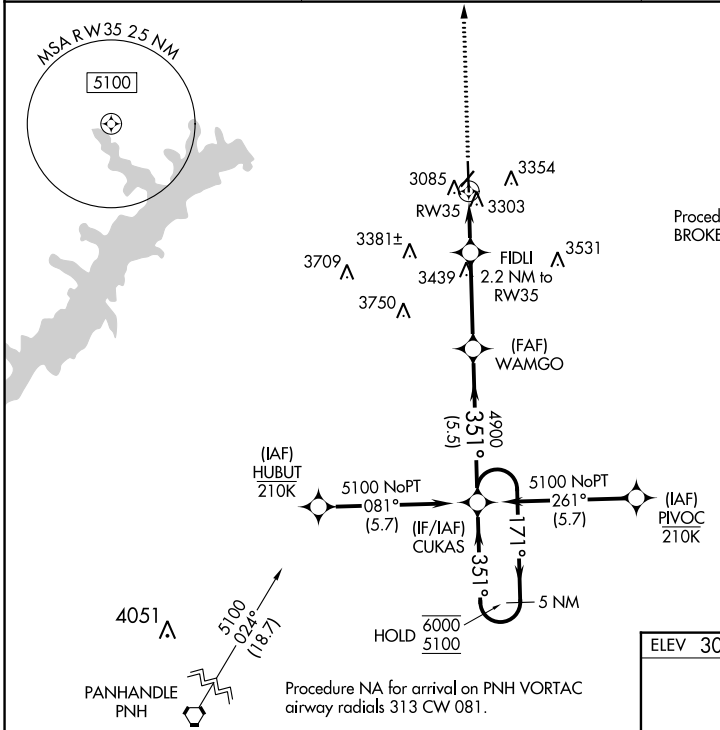
⚠ Rwy 35 helicopter visibility reduction below 3/4 SM NA. For uncompensated Baro-VNAV systems, LNAV/VNAV NA below -14°C or above 54°C.

MISSED APPROACH: Climb to 5000 direct JISAM and hold.

ASOS
118.325

AMARILLO APP CON ★
119.5 307.0

UNICOM
123.0 (CTAF) 0



CATEGORY	A	B	C	D
LPV DA	3305-1 250 (300-1)			
LNAV/VNAV DA	3554-1 3/8 499 (500-1 3/8)			
LNAV MDA	3560-1	505 (600-1)	3560-1 3/8	505 (600-1 3/8)
CIRCLING	3620-1 565 (600-1)	3660-1 605 (700-1)	3760-2 705 (800-2)	3760-2 1/4 705 (800-2 1/4)

SC-2, 25 FEB 2021 to 25 MAR 2021

SC-2, 25 FEB 2021 to 25 MAR 2021