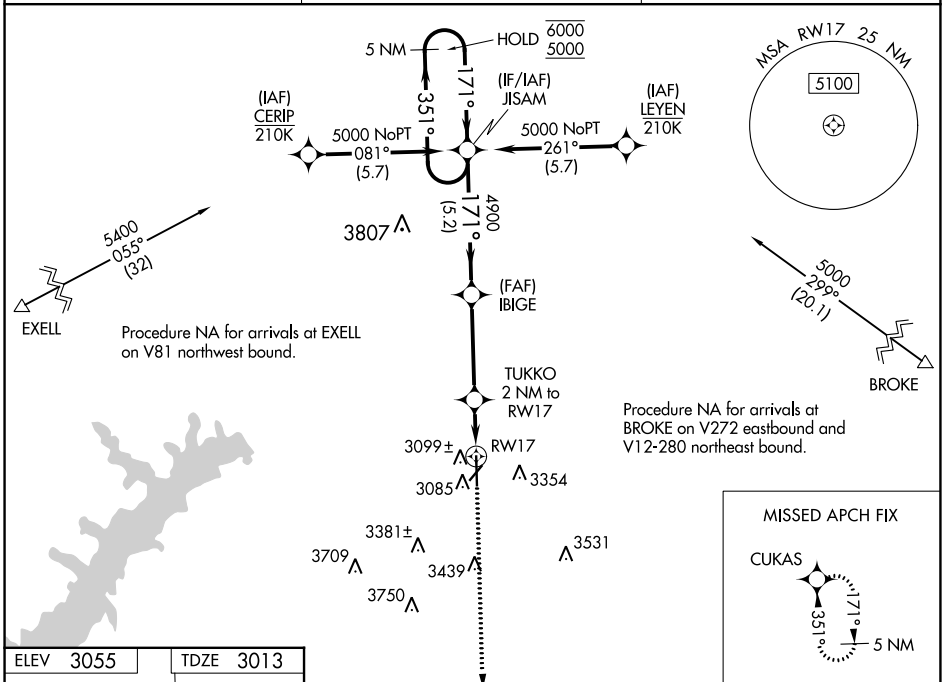


WAAS CH 99442 W17A	APP CRS 171°	Rwy Idg 6299 TDZE 3013 Apt Elev 3055
---------------------------------	------------------------	---

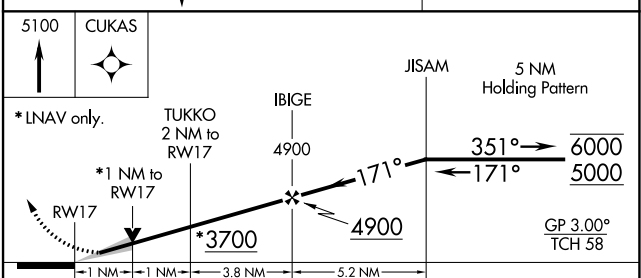
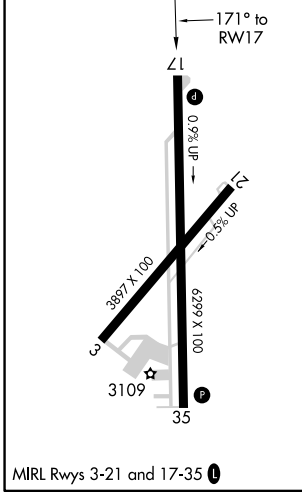
RNAV (GPS) RWY 17

HUTCHINSON COUNTY (BGD)

RNP APCH.		MISSED APPROACH: Climb to 5100 direct CUKAS and hold.
ASOS 118.325	AMARILLO APP CON ★ 119.5 307.0	UNICOM 123.0 (CTAF) 0



ELEV 3055	TDZE 3013
-----------	-----------



CATEGORY	A	B	C	D
LPV DA		3263-1	250 (300-1)	
LNAV/VNAV DA		3280-1	267 (300-1)	
LNAV MDA		3360-1	347 (400-1)	
C CIRCLING	3620-1 565 (600-1)	3660-1 605 (700-1)	3760-2 705 (800-2)	3760-2½ 705 (800-2½)

SC-2, 25 FEB 2021 to 25 MAR 2021

SC-2, 25 FEB 2021 to 25 MAR 2021