

| | | |
|--|------------------------|---|
| VORTAC BFM 112.8 Chan 75 | APP CRS 333° | Rwy Idg 9618 TDZE 25 Apt Elev 26 |
|--|------------------------|---|

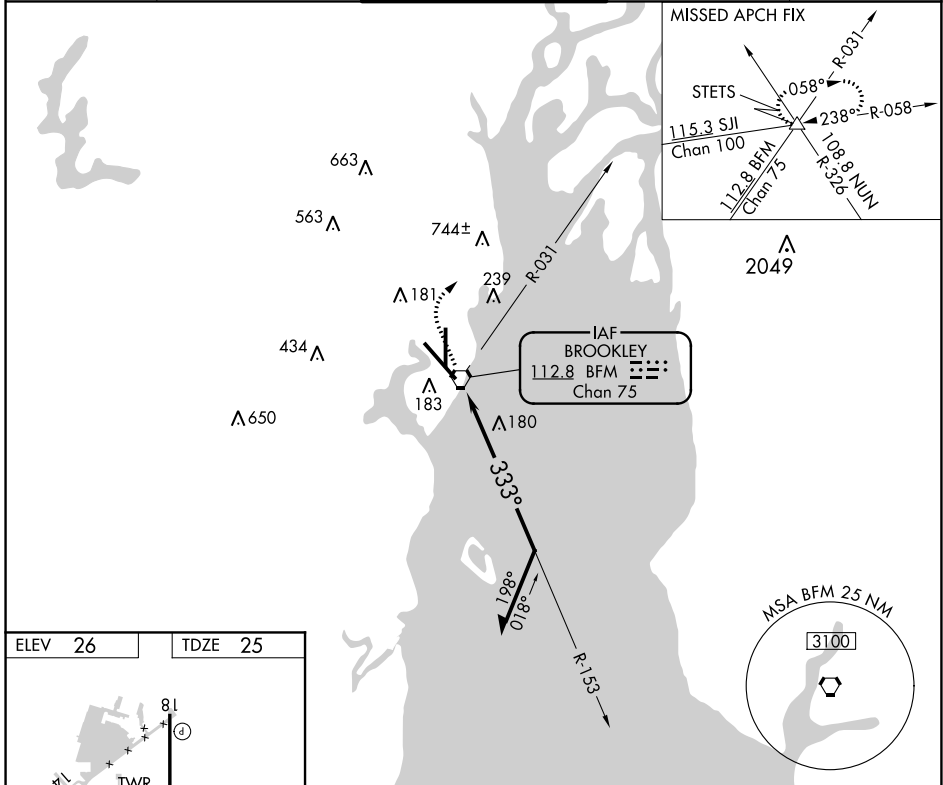
VOR RWY 32

MOBILE DOWNTOWN (BFM)

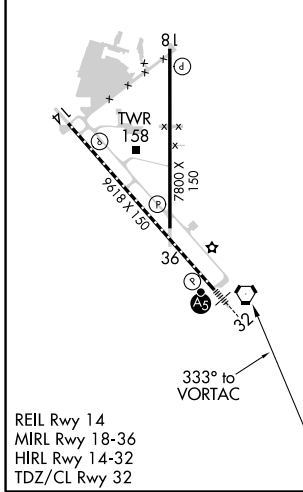
⚠ When local altimeter setting not received, use Mobile Rgnl altimeter setting and increase all MDA 60 feet and increase S-32 Cat C and D visibility ½ mile. When using Mobile Regional altimeter setting, inoperative table does not apply to Cat C and D.

MALSR MISSED APPROACH: Climb to 600 then climbing right turn to 2000 via heading 040° and BFM VORTAC R-031 to STETS INT and hold.

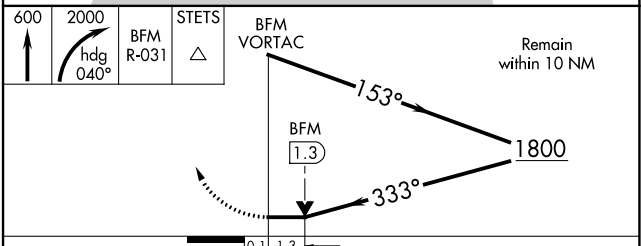
| | | | | |
|------------------------|--|--|-------------------------------|-------------------------|
| ATIS 135.575 | MOBILE APP CON ★ 118.5 269.3 | DOWNTOWN TOWER ★ 118.8 (CTAF) 0 251.1 | GND CON 121.7 239.3 | UNICOM 122.95 |
|------------------------|--|--|-------------------------------|-------------------------|



| | |
|---------|---------|
| ELEV 26 | TDZE 25 |
|---------|---------|



REIL Rwy 14
MIRL Rwy 18-36
HIRL Rwy 14-32
TDZ/CL Rwy 32



| CATEGORY | A | B | C | D |
|-------------------|--------|-------------|------------------------|-------------------------|
| S-32 | 540/24 | 515 (600-½) | 540/50 515 (600-1) | 540-1¼ 515 (600-1¼) |
| C CIRCLING | 680-1 | 654 (700-1) | 680-1¾ 654 (700-1¾) | 1100-3 1074 (1000-3) |

SE-4, 25 FEB 2021 to 25 MAR 2021

SE-4, 25 FEB 2021 to 25 MAR 2021