

WAAS CH 97611 W18A	APP CRS 181°	Rwy Idg 7800 TDZE 26 Apt Elev 26
----------------------------------------	------------------------	-------------------------------------------------------------

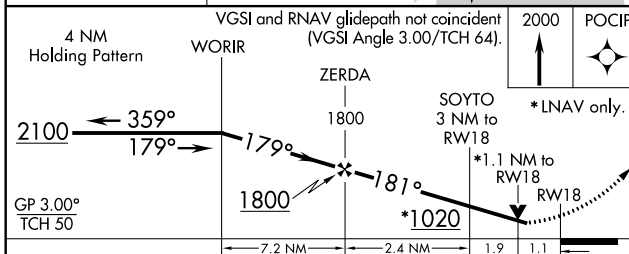
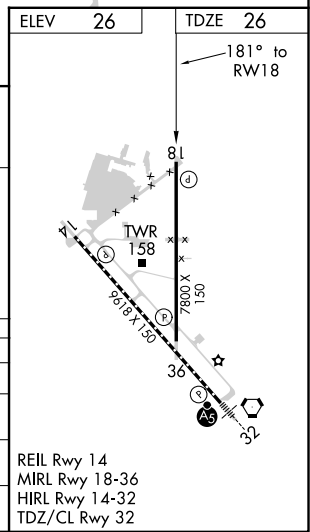
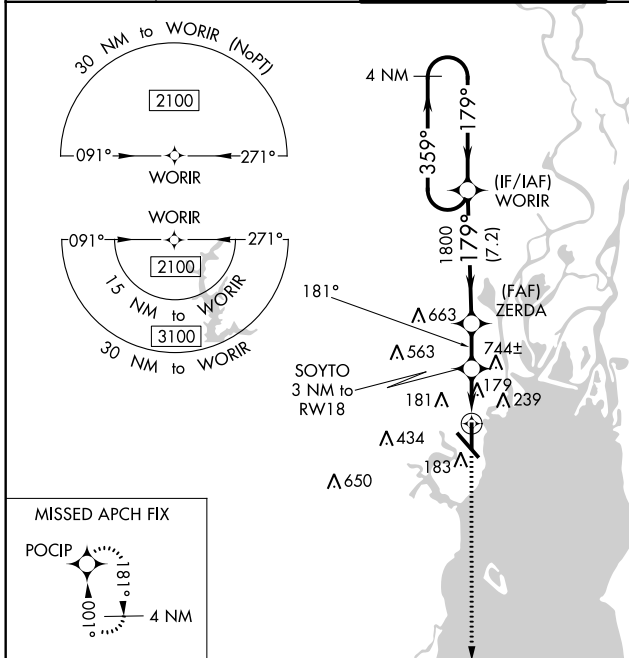
RNAV (GPS) RWY 18

MOBILE DOWNTOWN (BFM)

⚠ DME/DME RNP-0.3 NA. When local altimeter setting not received, use Mobile Rgnl altimeter setting and increase all DA 50 feet and MDA 60 feet and increase LPV all Cats visibility ¼ mile, increase LNAV/VNAV all Cats visibility ½ mile, increase LNAV Cat C/D visibility ¼ mile, and increase Circling Cat C visibility ½ mile. Helicopter visibility reduction below ¾ SM NA. For uncompensated Baro-VNAV systems, LNAV/VNAV NA below 13°C (56°F) or above 54°C (130°F). Baro-VNAV and VDP NA when using Mobile Rgnl altimeter setting.

MISSED APPROACH:
Climb to 2000 direct POCIP and hold.

ATIS 135.575	MOBILE APP CON * 118.5 269.3	DOWNTOWN TOWER * 118.8 (CTAF) 0 251.1	GND CON 121.7 239.3	UNICOM 122.95
------------------------	----------------------------------------	--------------------------------------------------------	-------------------------------	-------------------------



CATEGORY	A	B	C	D
LPV DA		276-¾	250 (300-¾)	
LNAV/VNAV DA		398-1¼	372 (400-1¼)	
LNAV MDA	440-1	414 (500-1)	440-1⅛	414 (500-1⅛)
C CIRCLING	680-1	654 (700-1)	680-1¾ 654 (700-1¾)	1100-3 1074 (1100-3)

REIL Rwy 14
 MIRL Rwy 18-36
 HIRL Rwy 14-32
 TDZ/CL Rwy 32

SE-4, 25 FEB 2021 to 25 MAR 2021

SE-4, 25 FEB 2021 to 25 MAR 2021