


WAAS CH <b>73005</b> <b>W12A</b>	APP CRS <b>126°</b>	Rwy Idg <b>8279</b> TDZE <b>3963</b> Apt Elev <b>3967</b>
----------------------------------------	------------------------	-----------------------------------------------------------------

# RNAV (GPS) RWY 12

WESTERN NEBRASKA RGNL/WILLIAM B HEILIG FIELD (BTF)

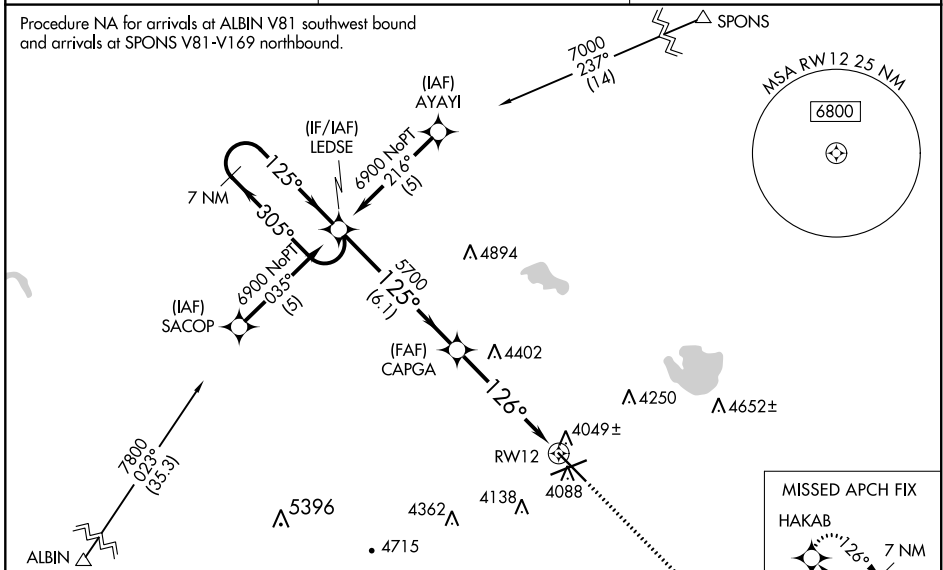
**⚠** When local altimeter setting not received, use Alliance altimeter setting and increase all DAs 91 feet and all MDAs 100 feet; increase LPV, LNAV/VNAV, LNAV Cat A/B and Circling Cat B visibilities ¼ mile; increase LNAV and Circling Cat C/D visibilities ½ mile. For inoperative MALSR, when using Alliance altimeter setting, increase LPV all Cats visibility to 1¼, and LNAV Cat A visibility to 1. For uncompensated Baro-VNAV systems, LNAV/VNAV NA below -22°C (-7°F) or above 41°C (105°F). Baro-VNAV NA when using Alliance altimeter setting. VDP NA when using Alliance altimeter setting. DME/DME RNP-0.3 NA.

**MALSR**

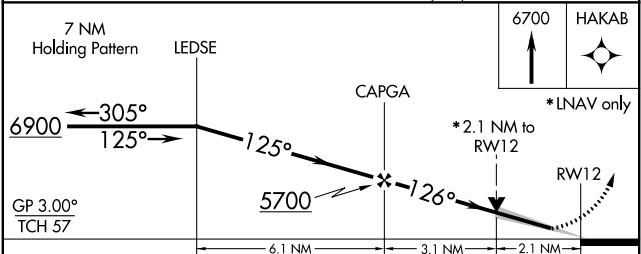
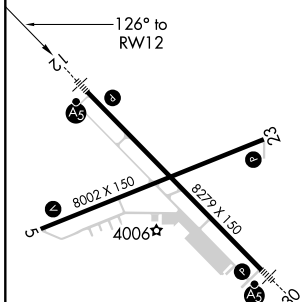


**MISSED APPROACH:**  
Climb to 6700 direct HAKAB and hold.

ASOS <b>121.025</b>	DENVER CENTER <b>127.95 338.2</b>	UNICOM <b>123.0 (CTAF) 1</b>
------------------------	--------------------------------------	---------------------------------



ELEV 3967	<b>D</b> TDZE 3963
-----------	--------------------



CATEGORY	A	B	C	D
LPV DA	4213-½ 250 (300-½)			
LNAV/VNAV DA	4340-¾ 377 (400-¾)			
LNAV MDA	4700-½ 737 (800-½)	4700-1½ 737 (800-1½)		4700-1¾ 737 (800-1¾)
<b>C</b> CIRCLING	4700-1 733 (800-1)	4700-2 733 (800-2)		4740-2½ 773 (800-2½)

HIRL Rwy 12-30 **1**  
MIRL Rwy 5-23 **1**

SCOTTSLUFF, NEBRASKA  
Amdt 1A 30JAN20

WESTERN NEBRASKA RGNL/WILLIAM B HEILIG FIELD (BTF)  
41°52'N-103°36' W

# RNAV (GPS) RWY 12

NC-2, 25 FEB 2021 to 25 MAR 2021

NC-2, 25 FEB 2021 to 25 MAR 2021