

WAAS CH <b>50441</b> <b>W02A</b>	APP CRS <b>017°</b>	Rwy Idg TDZE Apt Elev	<b>5218</b> <b>3256</b> <b>3265</b>
--	------------------------	-----------------------------	---

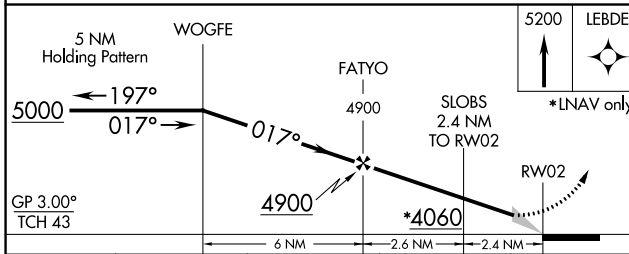
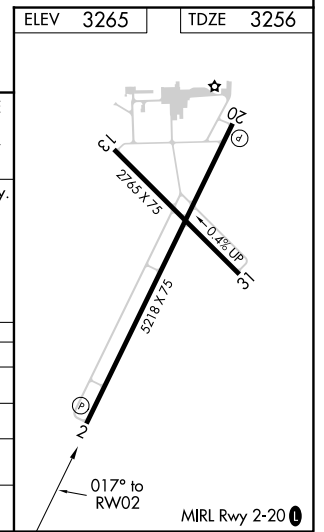
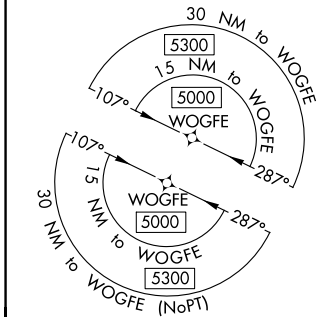
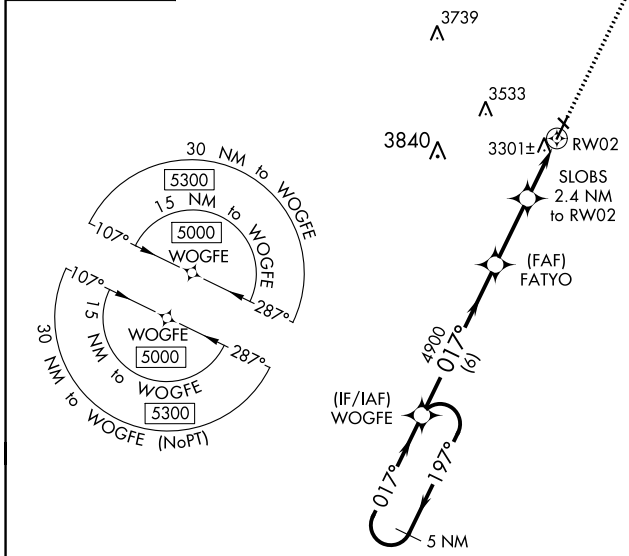
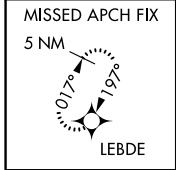
# RNAV (GPS) RWY 2

TERRY COUNTY (BFE)

**Baro-VNAV NA. Circling Rwy 13, 31 NA at night. DME/DME RNP-0.3 NA.**  
 Use Lubbock altimeter setting. When not received, use Seminole altimeter setting and increase LPV DA to 3600; increase LNAV/VNAV DA to 3600; and increase all MDA 20 feet.

**MISSED APPROACH:** Climb to 5200 direct LEBDE and hold.

LBB ASOS <b>125.3</b>	LUBBOCK APP CON <b>119.2 351.8</b>	UNICOM <b>122.8 (CTAF) 0</b>
--------------------------	---------------------------------------	---------------------------------



CATEGORY	A	B	C	D
LPV DA		3589-1	333 (400-1)	
LNAV/VNAV DA		3589-1	333 (400-1)	
LNAV MDA	3640-1	384 (400-1)	3640-1 1/8	384 (400-1 1/8)
<b>CIRCLING</b>	3760-1 495 (500-1)	3920-1 655 (700-1)	3980-2 715 (800-2)	4100-2 3/4 835 (900-2 3/4)

SC-2, 25 FEB 2021 to 25 MAR 2021

SC-2, 25 FEB 2021 to 25 MAR 2021