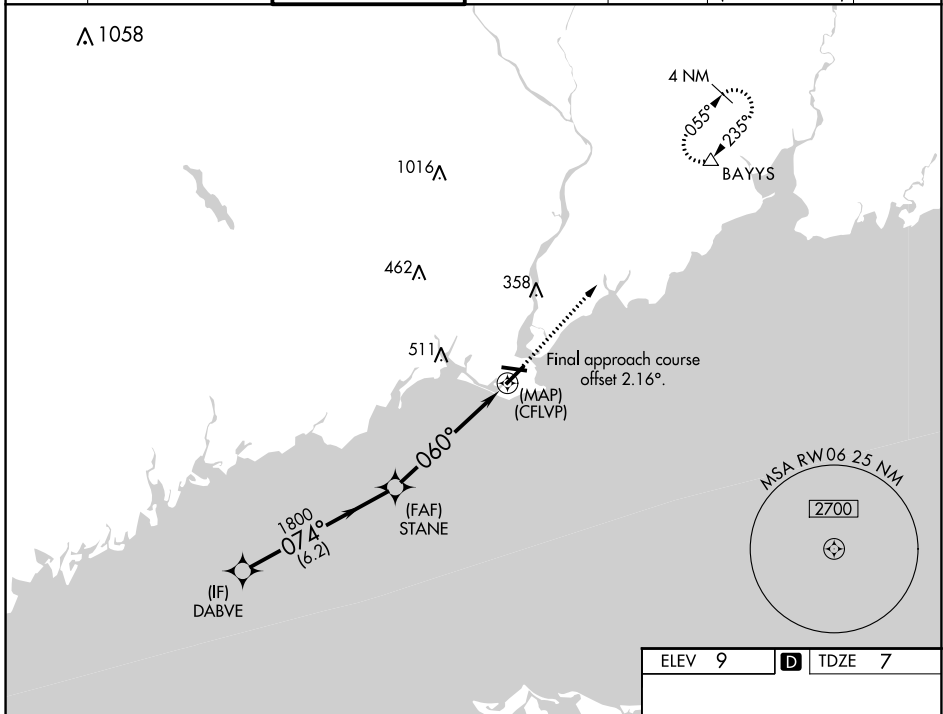


WAAS CH <b>78140</b> <b>W06A</b>	APP CRS <b>060°</b>	Rwy Idg TDZE Apt Elev	<b>4677</b> <b>7</b> <b>9</b>
--	------------------------	-----------------------------	-------------------------------------

# RNAV (GPS) RWY 6

IGOR I SIKORSKY MEMORIAL (B.D.R.)

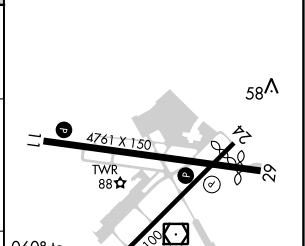
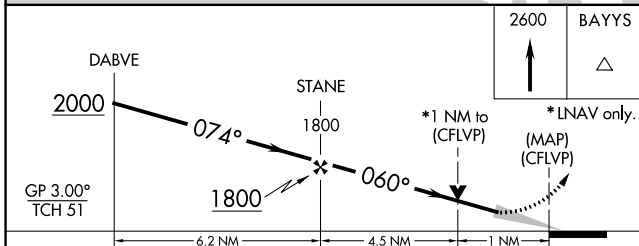
RNP APCH.		When VGS1 inop, Circling Rwy 11 NA at night. For uncompensated Baro-VNAV systems, LNAV/VNAV NA below -15°C (5°F) or above 54°C (130°F).		MISSED APPROACH: Climb to 2600 direct BAYYS and hold.		
ATIS <b>119.15</b>	NEW YORK APP CON <b>124.075 343.65</b>	BRIDGEPORT TOWER* <b>120.9</b> (CTAF) <b>257.8</b>	GND CON <b>121.75 257.8</b>	CLNC DEL <b>121.75</b>	CLNC DEL <b>124.075</b> (When twr closed)	UNICOM <b>123.0</b>



NE-1, 25 FEB 2021 to 25 MAR 2021

NE-1, 25 FEB 2021 to 25 MAR 2021

ELEV 9	<b>D</b> TDZE 7
--------	-----------------



CATEGORY	A	B	C	D
LPV DA		257-3/4	250 (300-3/4)	
LNAV/VNAV DA		273-7/8	266 (300-7/8)	
LNAV MDA		380-1	373 (400-1)	
<b>C</b> CIRCLING	480-1 471 (500-1)	620-1 611 (700-1)	820-2 1/2 811 (900-2 1/2)	820-2 3/4 811 (900-2 3/4)

060° to (CFLVP)

REIL Rws 6, 11, 24, and 29 **L**  
HIRL Rws 6-24 and 11-29 **L**