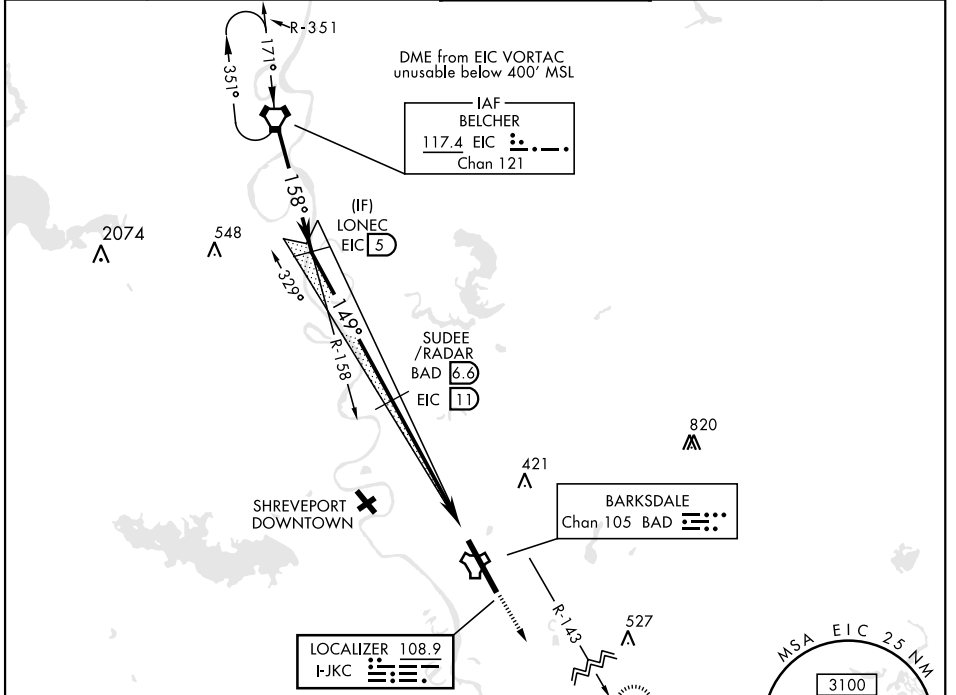


ILS or LOC Y RWY 15

LOC I-JKC 108.9	APCH CRS 149°	Rwy ldg 11,758 THRE 163 Arprt Elev 165	AL-391 [USAF]	BARKSDALE AFB (KBAD)	
* When ALS inop, increase RVR to 40 and vis to 3/4 mile. ** When ALS inop, increase CAT AB RVR to 55 and vis to 1 mile, CAT CDE vis to 1 3/8 miles. *** Circling not authorized W of Rwy.		ALSF-1 	MISSED APPROACH: Climb to 2000, then climbing left turn to join EIC VORTAC R-143 outbound direct TEVLE (EIC 34 DME) and hold, maintain 3000.		
ATIS 307.025	SHREVEPORT APP CON 320°-152° 123.75 360.725 153°-319° 119.9 335.55	BARKSDALE TOWER 128.25 278.3	GND CON 121.8 253.5	ASR	



RADAR or DME REQUIRED

EMERG SAFE ALT 100 NM 3700

ELEV 165	THRE 163
247	149° 5.8 NM from FAF
216	288
339	289
TWR 324	117.4 EIC 2.5 NM
247	33
HIRL Rwy 15-33	
FAF to MAP 5.2 NM	
Knots	60 90 120 150 180
Min:Sec	5:12 3:28 2:36 2:05 1:44

EIC VORTAC 4000	Incp. lczr LONEC EIC 5	SUDEE/RADAR BAD 6.6 EIC 11	2000	3000	
2500	7.49°	1800	EIC R-143	TEVLE EIC 34	
GS 2.50° TCH 53			FIRKU EIC 16.2		
CATEGORY		A	B	D	E
S-ILS 15*		363/24		200	(200-1/2)
S-LOC 15**		640/24	477 (500-1/2)	640/50	477 (500-1)
*** CIRCLING		NOT AUTHORIZED		760-2	780-2 1/4
				595 (600-2)	615 (700-2 1/4)

ILS or LOC Y RWY 15

SC-4, 25 FEB 2021 to 25 MAR 2021

SC-4, 25 FEB 2021 to 25 MAR 2021