

WAAS CH 61007 W31A	APP CRS 315°	Rwy Idg TDZE 1423 Apt Elev 1424	5099
--	------------------------	---	-------------

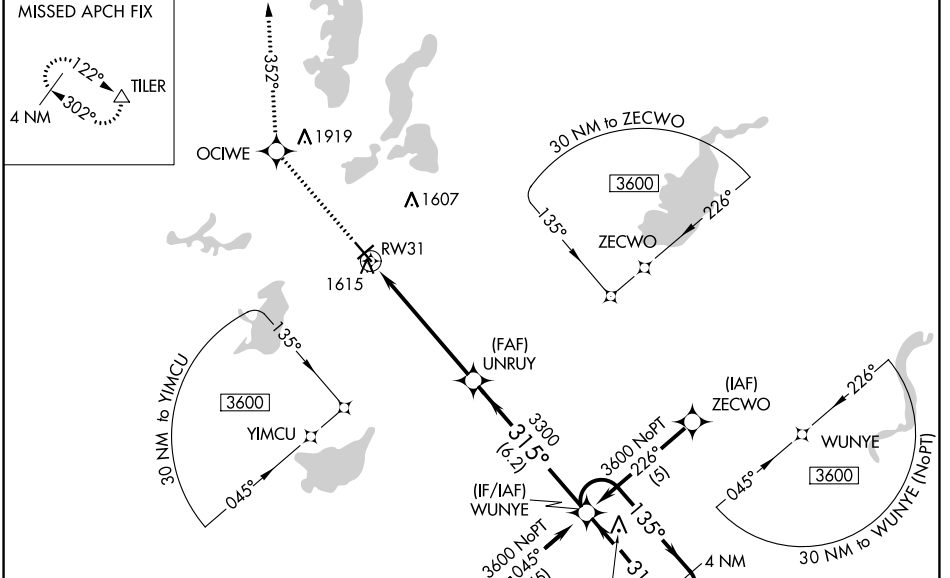
RNAV (GPS) RWY 31

CHANDLER FIELD (AXN)

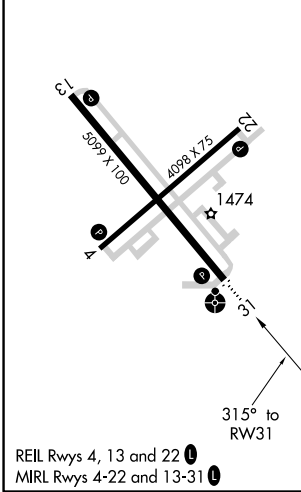
⚠ Inoperative table does not apply to LPV & LNAV/VNAV Cats A/B/C and LNAV Cat C. For uncompensated Baro-VNAV systems, LNAV/VNAV NA below -17°C (2°F) or above 46°C (114°F). DME/DME RNP -0.3 NA. VDP and Baro-VNAV NA when using Glenwood altimeter setting. When local altimeter setting not received, use Glenwood altimeter setting and increase all DAs/MDAs 40 feet and increase LPV and LNAV/VNAV visibilities ¼ mile all Cats.

ODALS
 MISSED APPROACH: Climb to 3500 direct OCIWE and via 352° track to TILER and hold.

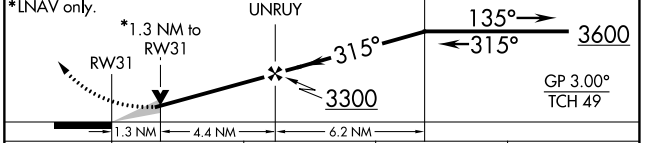
ASOS 118.375	MINNEAPOLIS CENTER 126.1 269.2	UNICOM 123.0 (CTAF) 0
------------------------	--	---------------------------------



ELEV 1424	TDZE 1423
-----------	-----------



3500	OCIWE	tr 352°	TILER	WUNYE	4 NM Holding Pattern
------	-------	---------	-------	-------	----------------------



CATEGORY	A	B	C	D
LPV DA		1815-1¼	392 (400-1¼)	
LNAV/VNAV DA		1885-1½	462 (500-1½)	
LNAV MDA	1880-¾	457 (500-¾)	1880-1¼ 457 (500-1¼)	1880-1½ 457 (500-1½)
CIRCLING	1920-1	496 (500-1)	1920-1½ 496 (500-1½)	1980-2 556 (600-2)

NC-1, 25 FEB 2021 to 25 MAR 2021

NC-1, 25 FEB 2021 to 25 MAR 2021