

# SCRANTON EIGHT DEPARTURE

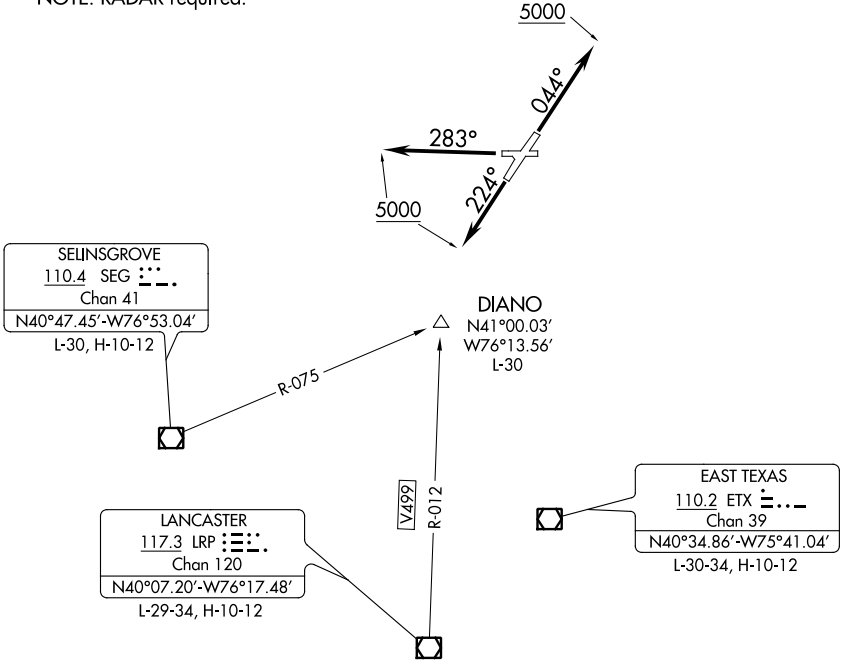
WILKES-BARRE/SCRANTON INTL (AVP)  
WILKES-BARRE/SCRANTON, PENNSYLVANIA

ATIS 111.6  
GND CON  
121.9  
WILKES-BARRE TOWER  
120.1 257.8  
WILKES-BARRE DEP CON  
120.95 256.7 (NORTH)  
126.3 256.7 (SOUTH)

**TOP ALTITUDE:  
5000**

BINGHAMTON
112.2 CFB
Chan 59
N42°09.45'-W76°08.19'
L-30-32, H-10-12

NOTE: RADAR required.



**TAKEOFF MINIMUMS:**

- Rwy 10: NA - Obstacles.
- Rwy 4: Standard with minimum climb of 400' per NM to 2700.
- Rwy 22: Standard with minimum climb of 290' per NM to 3100.
- Rwy 28: Standard with minimum climb of 270' per NM to 2100.

NOTE: Chart not to scale.



### DEPARTURE ROUTE DESCRIPTION

- TAKEOFF RUNWAY 4:** Climb heading 044° to 5000, thence....
- TAKEOFF RUNWAY 22:** Climb heading 224° to 5000, thence....
- TAKEOFF RUNWAY 28:** Climb heading 283° to 5000, thence....

...expect radar vectors to assigned route/navaid/fix, expect filed altitude 10 minutes after departure.

NE-4, 25 FEB 2021 to 25 MAR 2021

NE-4, 25 FEB 2021 to 25 MAR 2021