

LOC/DME I-ZK	APP CRS	Rwy Idg	7501
109.9	225°	TDZE	933
Chan 36		Apt Elev	962

ILS or LOC RWY 22

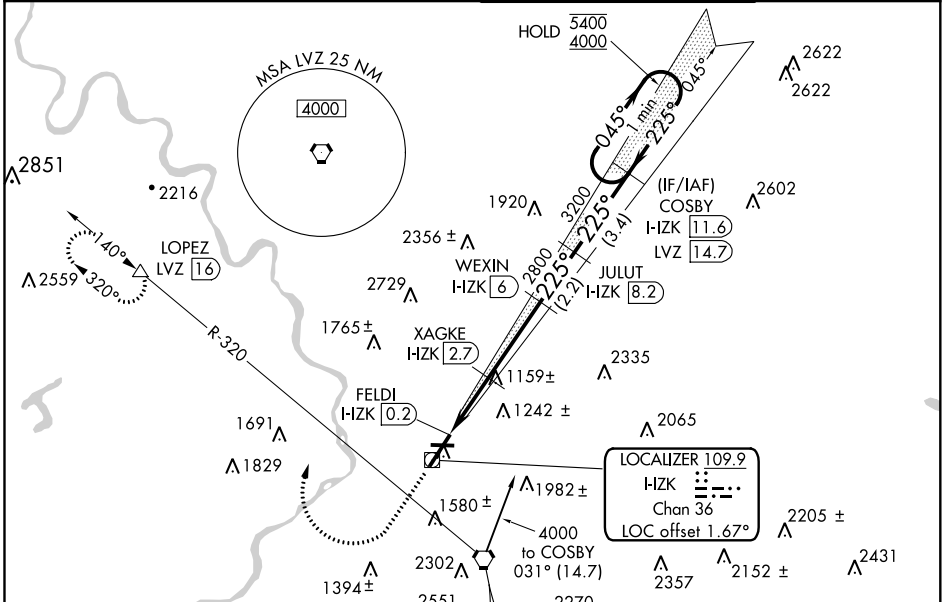
WILKES-BARRE/SCRANTON INTL (AVP)

RADAR or DME required for procedure entry. DME required.

▲ Circling NA for Cats C and D southeast of Rwy 4-22.
▲ Circling Rwy 28 NA at night.
 When local altimeter setting not received, procedure NA.

MISSED APPROACH: Climb to 1900 then climbing right turn to 4000 on heading 330° and LVZ VORTAC R-320 to LOPEZ/LVZ 16 DME and hold.

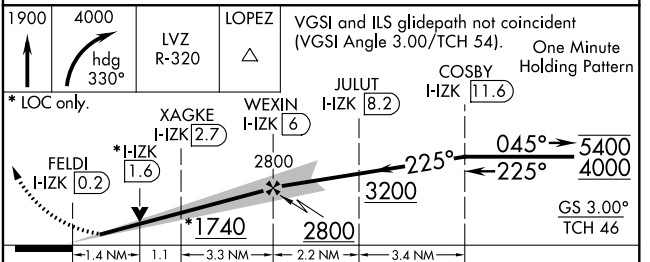
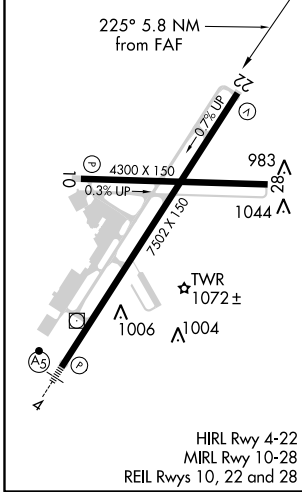
ATIS 111.6	WILKES-BARRE APP CON 120.95 256.7 126.3 256.7 (101°-279°)	WILKES-BARRE TOWER 120.1 257.8	GND CON 121.9
----------------------	-------------------------------------------------------------------------------	------------------------------------------	-------------------------



NE-4, 25 FEB 2021 to 25 MAR 2021

NE-4, 25 FEB 2021 to 25 MAR 2021

ELEV 962	D	TDZE 933
----------	----------	----------



CATEGORY	A	B	C	D
S-ILS 22	1201/45		268 (300-7%)	
S-LOC 22	1420/55	487 (500-1)	1420-1 ³ / ₈	487 (500-1 ³ / ₈)
C CIRCLING	1840-1 ¹ / ₄ 878 (900-1 ¹ / ₄)	1980-1 ¹ / ₂ 1018 (1100-1 ¹ / ₂)	1980-3 1018 (1100-3)	2280-3 1318 (1400-3)