

VORTAC ATY 116.6 Chan 113	APP CRS 177°	Rwy Idg TDZE 1741 Apt Elev 1749	6893
---	------------------------	---	-------------

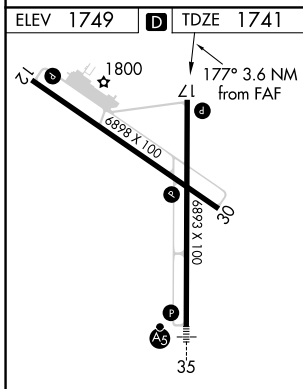
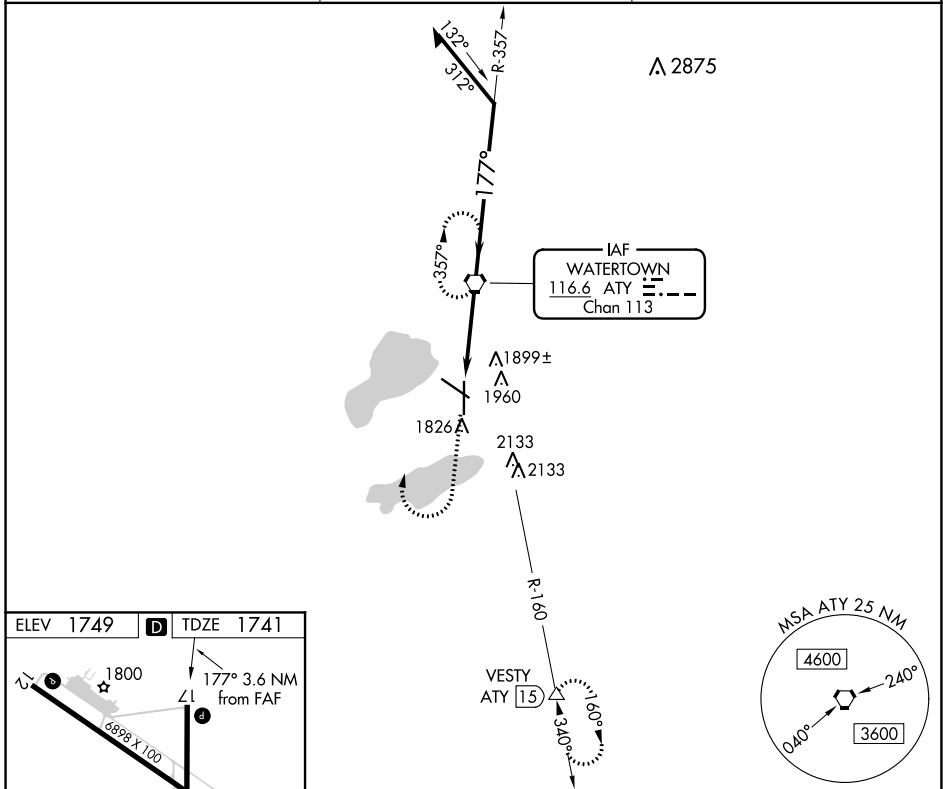
VOR or TACAN RWY 17

WATERTOWN RGNL (ATY)

⚠ Rwy 17 helicopter visibility reduction below 3/4 SM NA. When local altimeter setting not received, use Brookings altimeter setting and increase all MDAs 120 feet; increase Circling Cat C and D visibility 1/4 SM. VDP NA when using Brookings altimeter setting.

MISSED APPROACH: Climb to 2400 then climbing right turn to 4000 direct ATY VORTAC and hold. (TACAN aircraft climb to 5000 on ATY VORTAC R-160 to VESTY/15 DME and hold south, right turn, 340° inbound.)

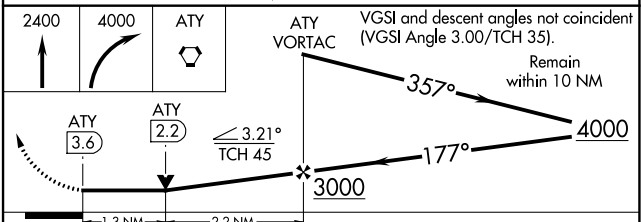
ASOS 126.625	MINNEAPOLIS CENTER 128.5 306.2	UNICOM 123.05 (CTAF)
------------------------	--	--------------------------------



REIL Rws 12, 17 and 30
HIRL Rwy 17-35
MIRL Rwy 12-30

FAF to MAP 3.6 NM

Knots	60	90	120	150	180
Min:Sec	3:36	2:24	1:48	1:26	1:12



CATEGORY	A	B	C	D
S-17	2200-1	460 (500-1)	2200-1 1/4 460 (500-1 1/4)	2200-1 1/2 460 (500-1 1/2)
C CIRCLING	2260-1	511 (600-1)	2500-2 1/4 751 (800-2 1/4)	2500-2 1/2 751 (800-2 1/2)

NC-1, 25 FEB 2021 to 25 MAR 2021

NC-1, 25 FEB 2021 to 25 MAR 2021