

WAAS CH <b>53405</b> <b>W12A</b>	APP CRS <b>118°</b>	Rwy Idg TDZE Apt Elev	<b>6898</b> <b>1749</b> <b>1749</b>
--	------------------------	-----------------------------	---

# RNAV (GPS) RWY 12

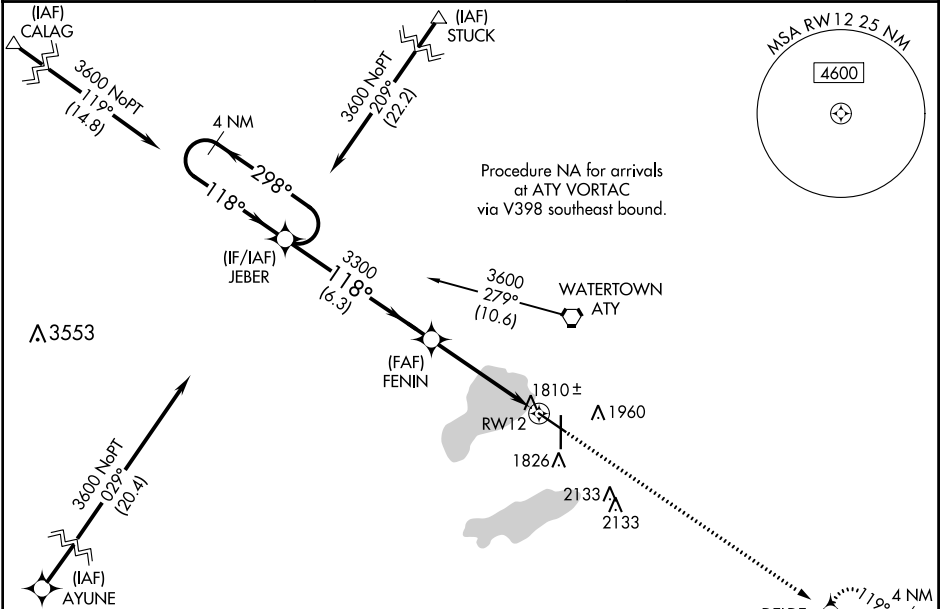
WATERTOWN RGNL (ATY)

RNP APCH.

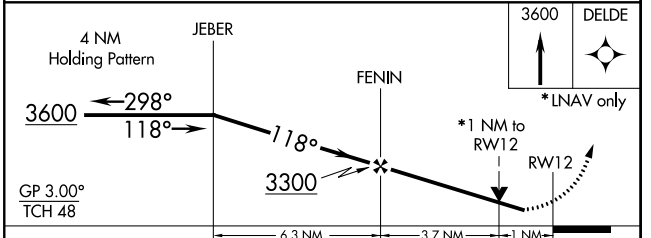
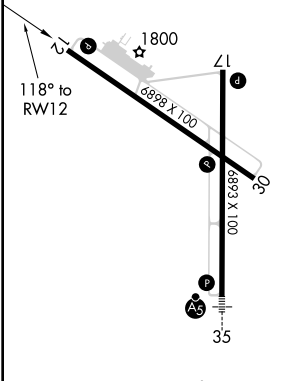
**⚠** For uncompensated Baro-VNAV systems, LNAV/VNAV NA below -18°C (0°F) or above 45°C (113°F). Rwy 12 helicopter visibility reduction below 3/4 SM NA. When local altimeter setting not received, use Brookings altimeter setting and increase all DA 105 feet and all MDA 120 feet, increase LNAV Cat C and D visibility 3/8 SM and Circling Cat C/D visibility 1/2 SM. VDP NA when using Brookings altimeter setting. Baro-VNAV NA when using Brookings altimeter setting.

MISSED APPROACH: Climb to 3600 direct DELDE and hold.

ASOS <b>126.625</b>	MINNEAPOLIS CENTER <b>128.5 306.2</b>	UNICOM <b>123.05 (CTAF) 0</b>
------------------------	--	----------------------------------



ELEV 1749	<b>D</b>	TDZE 1749
-----------	----------	-----------



CATEGORY	A	B	C	D
LPV DA	2021-1 272 (300-1)			
LNAV/VNAV DA	2076-1½ 327 (400-1½)			
LNAV MDA	2100-1 351 (400-1)			
<b>C</b> CIRCLING	2260-1 511 (600-1)	2500-2¼ 751 (800-2¼)	2500-2½ 751 (800-2½)	

REIL Rwy 12, 17 and 30 **L**

HIRL Rwy 17-35 **L**

MIRL Rwy 12-30 **L**

NC-1, 25 FEB 2021 to 25 MAR 2021

NC-1, 25 FEB 2021 to 25 MAR 2021