

ILS or LOC RWY 8R

HARTSFIELD-JACKSON ATLANTA INTL (ATL)

LOC/DME I-ATL 109.9 Chan 36	APP CRS 095°	Rwy Idg TDZE Apt Elev	8R 9999 8800 1024 1015 1026 1026	8L 1024 1015 1026 1026
-------------------------------------------------	------------------------	-----------------------------	----------------------------------------------------------------	--------------------------------------------

▽ Inop table does not apply to Sidestep 8L Cats A and B.
For inop ALSF-2, increase Sidestep 8L Cat E visibility to 2.
Simultaneous approach authorized with Rwy 9L or 9R or 10.
ADF or DME or RADAR required.

Rwy 8L
ALSF-2

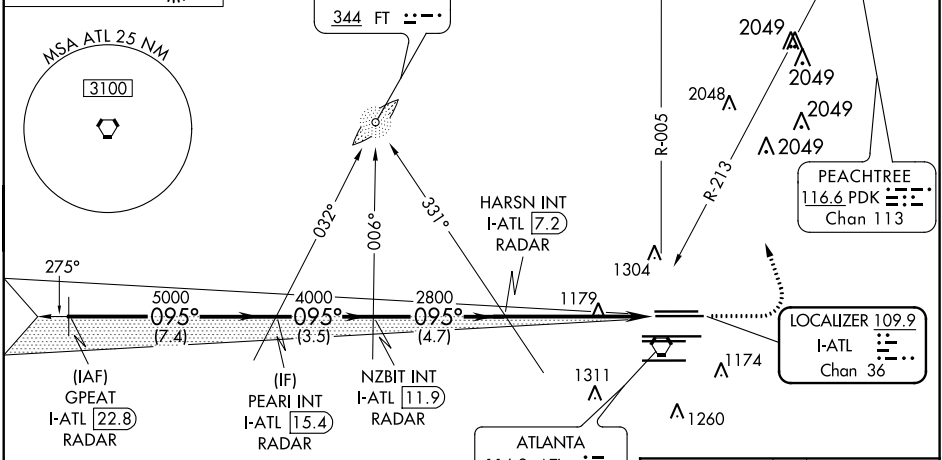
MISSED APPROACH: Climb to 1500 then climbing left turn to 3500 on ATL VORTAC R-005 to TROYS INT/ATL 15 DME and hold. (TACAN aircraft climb to 1500 then climbing left turn to 3500 on heading 005° for RADAR vectors.)

D-ATIS ARR 119.65	ATLANTA APP CON DEP 127.9 379.9	ATLANTA TOWER 8L-26R 8R-26L 9L-27R 9R-27L 10-28 RWYS				ALL RWYS 119.3 119.5 254.4	GND CON (8L-26R,8R-26L) (9L-27R,9R-27L) 10-28	ALL RWYS 121.65 254.4
-----------------------------	----------------------------------------------	---------------------------------------------------------	--	--	--	-----------------------------------------	--------------------------------------------------	------------------------------------

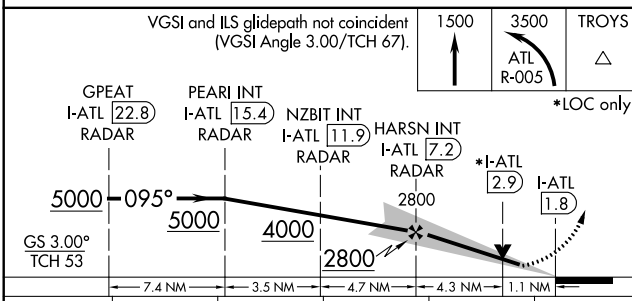
ALTERNATE
MISSED APCH
FIX

PEACHTREE
PDK **116.6**
Chan 113

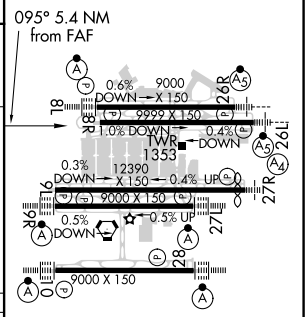
R-003 183°
003°



RADAR REQUIRED



ELEV 1026	TDZE 8R 1024	TDZE 8L 1015
-----------	--------------	--------------



CATEGORY	A	B	C	D	E
S-ILS 8R	1278/40		254 (300-¾)		
S-LOC 8R	1440/55	416 (500-1)	1440/60		416 (500-1½)
SIDESTEP 8L	1440/55		425 (500-1)	1440-1½ 425 (500-1½)	

HIRL all Rwys
TDZ/CL Rwys 8L,
9R, 10, 26R, 27L and 28

FAF to MAP 5.4 NM

Knots	60	90	120	150	180
Min:Sec	5:24	3:36	2:42	2:10	1:48

SE-4, 25 FEB 2021 to 25 MAR 2021

SE-4, 25 FEB 2021 to 25 MAR 2021