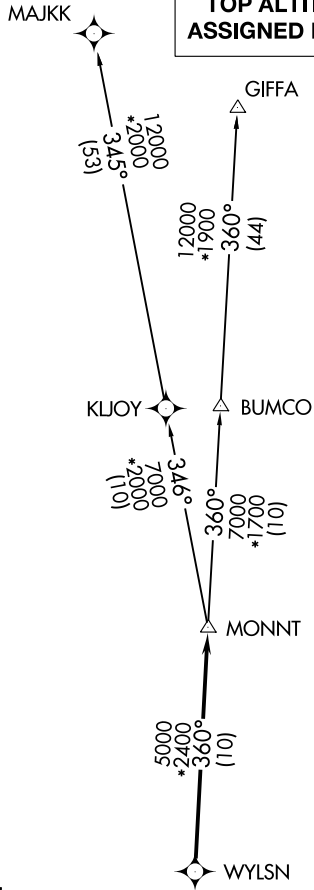


# WYLSN SEVEN DEPARTURE (RNAV)

HOUSTON DEP CON  
128.6 360.85

NOTE: RADAR required.  
NOTE: DME/DME/IRU or GPS required.  
NOTE: RNAV 1.

TAKEOFF MINIMUMS  
Rwy 14, 32: Standard with minimum  
climb of 500' per NM to 600.



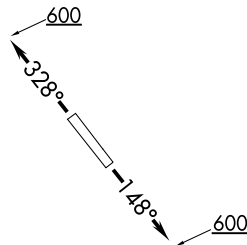
## DEPARTURE ROUTE DESCRIPTION

TAKEOFF RWY 14: Climb heading 148° to 600  
for RADAR vectors to WYLSN, thence. . . .

TAKEOFF RWY 32: Climb heading 328° to 600  
for RADAR vectors to WYLSN, thence. . . .

. . . .on track 360° to MONNT, then on (transition).  
Maintain ATC assigned altitude. Expect filed altitude  
10 minutes after departure.

GIFFA TRANSITION (WYLSN7.GIFFA)  
MAJKK TRANSITION (WYLSN7.MAJKK)



NOTE: Chart not to scale.

# WYLSN SEVEN DEPARTURE (RNAV)