

NAPLES, FLORIDA

AL-6020 (FAA)

21056

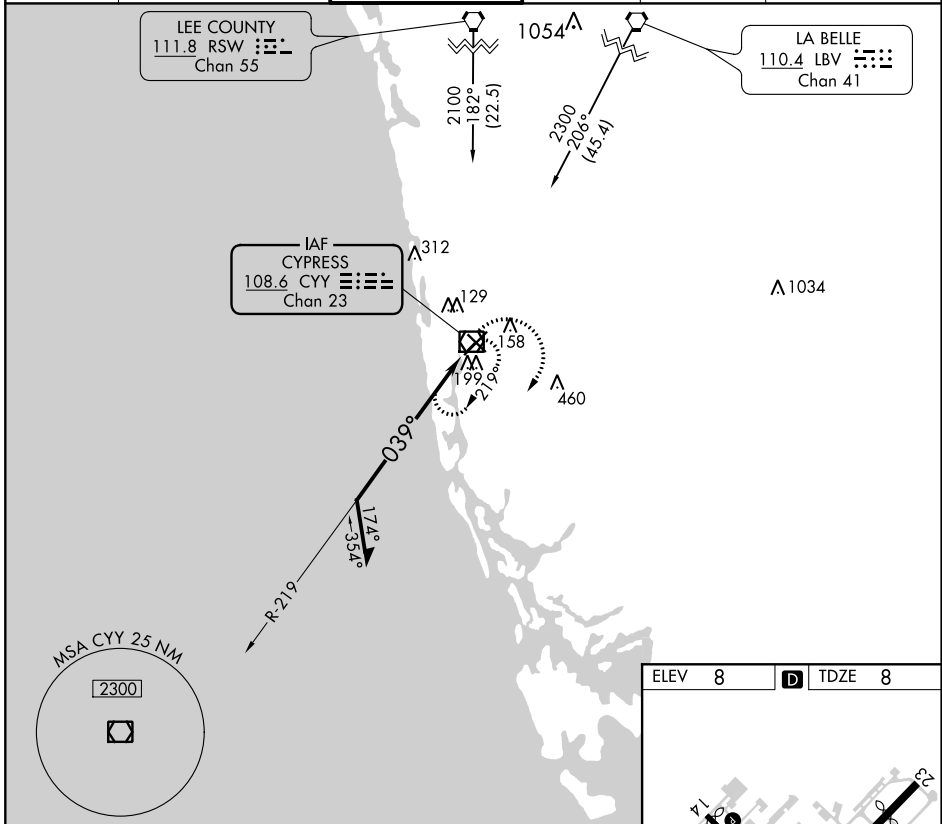
VOR/DME CY 108.6 Chan 23	APP CRS 039°	Rwy Idg TDZE Apt Elev	5000 8 8
---------------------------------------	------------------------	-----------------------------	-------------------------------------

VOR RWY 5

NAPLES MUNI (APF)

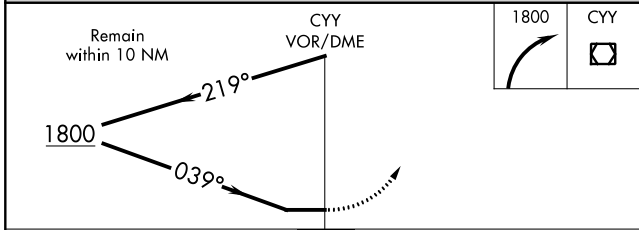
MISSED APPROACH: Climbing right turn to 1800 in CYV VOR/DME holding pattern.

ATIS 134.225	FORT MYERS APP CON* 124.125 371.85	NAPLES TOWER* 128.5 (CTAF) 0	GND CON 121.6	CLNC DEL 118.0	CLNC DEL 124.125 (When twr closed)
------------------------	--	---	-------------------------	--------------------------	---

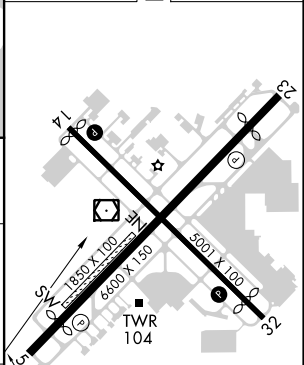


SE-3, 25 FEB 2021 to 25 MAR 2021

SE-3, 25 FEB 2021 to 25 MAR 2021



ELEV 8	TDZE 8
--------	--------



CATEGORY	A	B	C	D
S-5	580-1	572 (600-1)	580-1½	572 (600-1½)
C CIRCLING	580-1	572 (600-1)	680-2 672 (700-2)	820-2¾ 812 (900-2¾)

039° to VOR/DME

MIRL Rws 5-23 and 14-32 **0**
REIL Rws 5, 14, 23 and 32 **0**

NAPLES, FLORIDA
Amdt 5C 25FEB21

26°09'N-81°47'W

NAPLES MUNI (APF) VOR RWY 5