

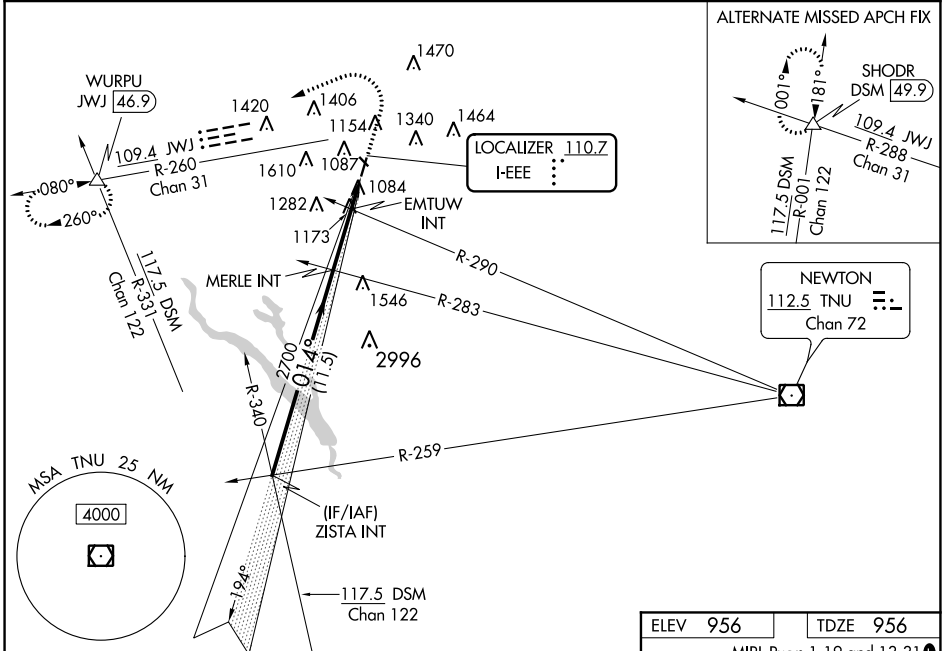
LOC I-EEEE 110.7	APP CRS 014°	Rwy Idg TDZE Apt Elev	5701 956 956
----------------------------	------------------------	-----------------------------	---

ILS or LOC RWY 1

AMES MUNI (AMW)

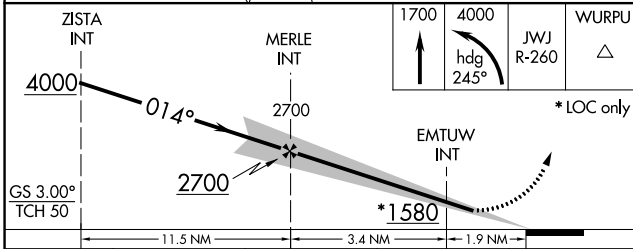
<p>-27°C</p>	<p>MALSR</p>	<p>MISSED APPROACH: Climb to 1700 then climbing left turn to 4000 on heading 245° and JWJ VOR/DME R-260 to WURPU INT/JWJ 46.9 DME and hold.</p>
--------------	--------------	---

ASOS 132.025	DES MOINES APP CON 123.9 307.15	CLNC DEL 126.0	UNICOM 122.7 (CTAF)
------------------------	---	--------------------------	-------------------------------



NC-3, 25 FEB 2021 to 25 MAR 2021

NC-3, 25 FEB 2021 to 25 MAR 2021



ELEV 956	TDZE 956
----------	----------

MIRL Rwy's 1-19 and 13-31

3491 X 75
5701 X 100 - 0.6% UP

014° 5.3 NM from FAF

FAF to MAP 5.3 NM

Knots	60	90	120	150	180
Min:Sec	5:18	3:32	2:39	2:07	1:46

CATEGORY	A	B	C	D
S-ILS 1		1206-1/2	250 (300-1/2)	
S-LOC 1	1580-1/2	624 (700-1/2)	1580-1 3/8	624 (700-1 3/8)
CIRCLING	1580-1	624 (700-1)	1640-2 684 (700-2)	1960-3 1004 (1100-3)
EMTUW FIX MINIMUMS (DUAL VOR RECEIVERS REQUIRED)				
S-LOC 1	1440-1/2	484 (500-1/2)	1440-1	484 (500-1)
CIRCLING	1440-1 484 (500-1)	1460-1 504 (600-1)	1640-2 684 (700-2)	1960-3 1004 (1100-3)