

APP CRS 038°	Rwy Idg TDZE Apt Elev	13502 3607 3607
------------------------	-----------------------------	--

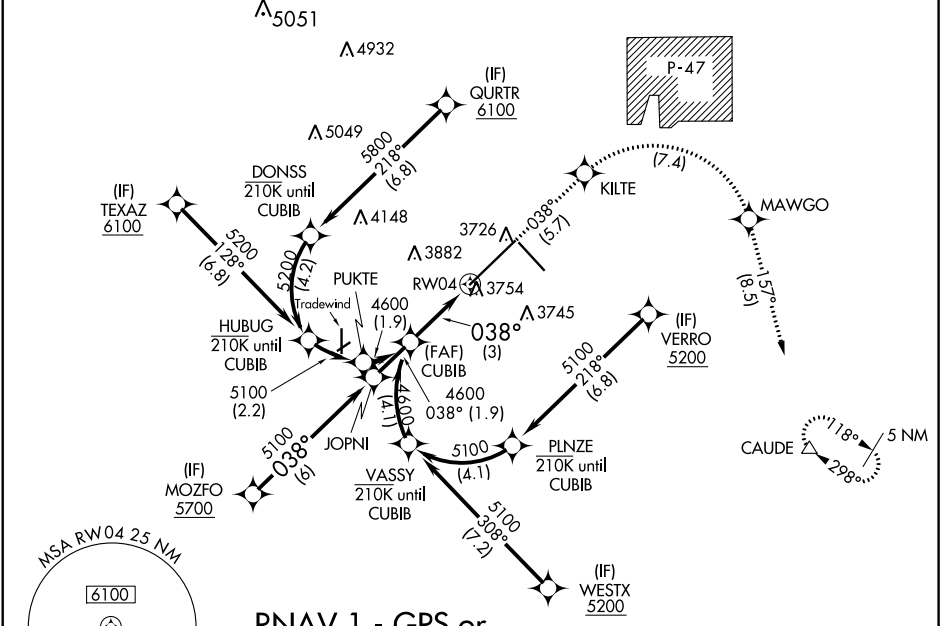
RNAV (RNP) Z RWY 4

RICK HUSBAND AMARILLO INTL (AMA)

ASR For uncompensated Baro-VNAV systems, procedure NA below -14°C (7°F) or above 53°C (128°F). RF required. GPS required. For inop ALS, increase RNP 0.30 all Cats visibility to 1 3/8 SM.

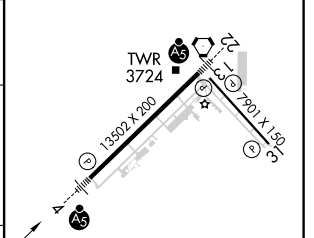
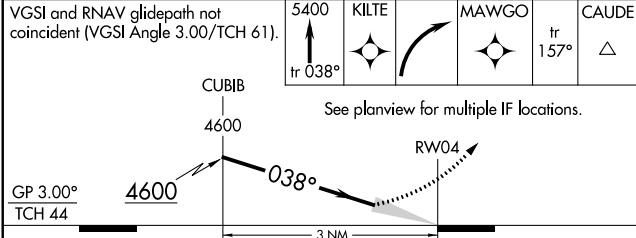
MALSRL MISSED APPROACH: (Do not exceed 185K until MAWGO) Climb to 5400 on track 038° to KILTE, right turn to MAWGO, then track 157° to CAUDE and hold.

ATIS 118.85 350.3	AMARILLO APP CON* 119.5 307.0	AMARILLO TOWER* 118.3(CTAF) 257.9	GND CON 121.9 348.6	CLNC DEL 121.65 239.275	UNICOM 122.95
-----------------------------	---	---	-------------------------------	-----------------------------------	-------------------------



RNAV 1 - GPS or RADAR REQUIRED

ELEV 3607	D TDZE 3607
-----------	--------------------



CATEGORY	A	B	C	D
RNP 0.12 DA		3969/40	362 (400-3/4)	
RNP 0.30 DA		4019/50	412 (500-1)	

AUTHORIZATION REQUIRED

REIL Rwy 13 and 31
HIRL Rwy 4-22 and 13-31

SC-2, 25 FEB 2021 to 25 MAR 2021

SC-2, 25 FEB 2021 to 25 MAR 2021