

VORTAC PNH <b>116.6</b> Chan <b>113</b>	APCH CRS <b>037°</b>	Rwy ldg <b>13,502</b> TDZE <b>3607</b> Arprt Elev <b>3607</b>
---	-------------------------	---

JAL-19 [USAF]

RICK HUSBAND AMARILLO INTL (KAMA)

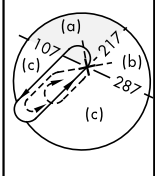
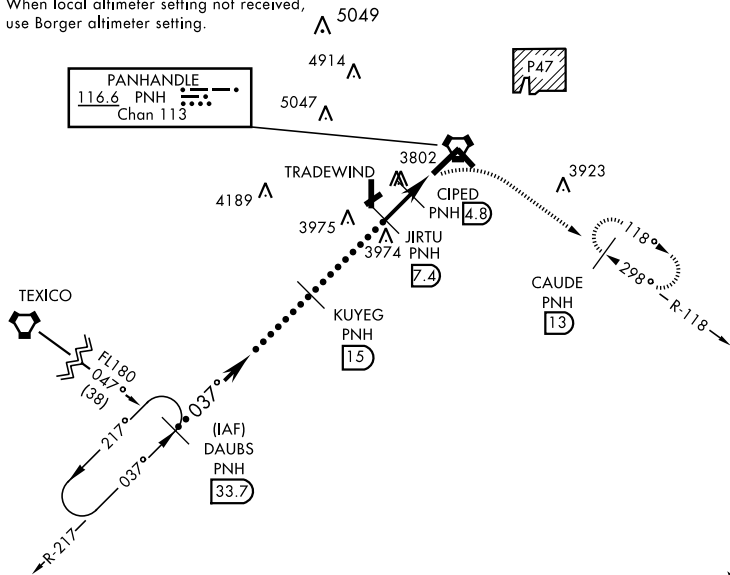
▼ \* When ALS inop, increase CAT D vis to 1¼ miles, CAT E vis to 1½ miles.  
 \*\* When ALS inop, increase CAT CD vis to 1½ miles, CAT E vis to 1¾ miles.



MISSED APPROACH: Climbing right turn to 5000 on heading 090° and PNH VORTAC R-118 to CAUDE/PNH 13 DME and hold.

ATIS <b>118.85 350.3</b>	AMARILLO APP CON <b>119.5 307.0</b>	AMARILLO TOWER* <b>118.3 0 257.9</b>	GND CON <b>121.9 348.6</b>	CLNC DEL <b>121.65 239.275</b>	ASR
-----------------------------	--	---	-------------------------------	-----------------------------------	-----

When local altimeter setting not received, use Borger altimeter setting.

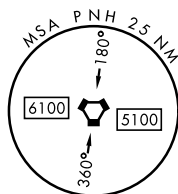
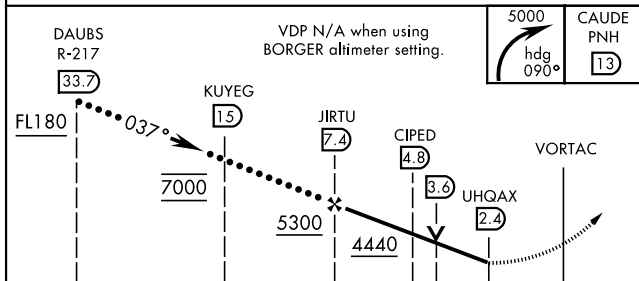


SC-2, 25 FEB 2021 to 25 MAR 2021

SC-2, 25 FEB 2021 to 25 MAR 2021

## DME REQUIRED

EMERG SAFE ALT 100 NM 7500



CATEGORY	C	D	E
S-4 *	4040/40 433 (500-¾)	4040/50 433 (500-1)	
<b>C</b> CIRCLING	4240-1¾ 633 (700-1¾)	4280-2¼ 673 (700-2¼)	4460-3 853 (900-3)
BORGER ALTIMETER SETTING			
S-4 **	4200-1¼	593	(600-1¼)
<b>C</b> CIRCLING	4400-2¼ 793 (900-2¼)	4440-2¾ 833 (900-2¾)	4620-3 1013 (1100-3)

