

VOR/DME BWS 109.6 Chan 33	APP CRS 038°	Rwy Idg TDZE Apt Elev	9207 4151 4199
--	------------------------	-----------------------------	---

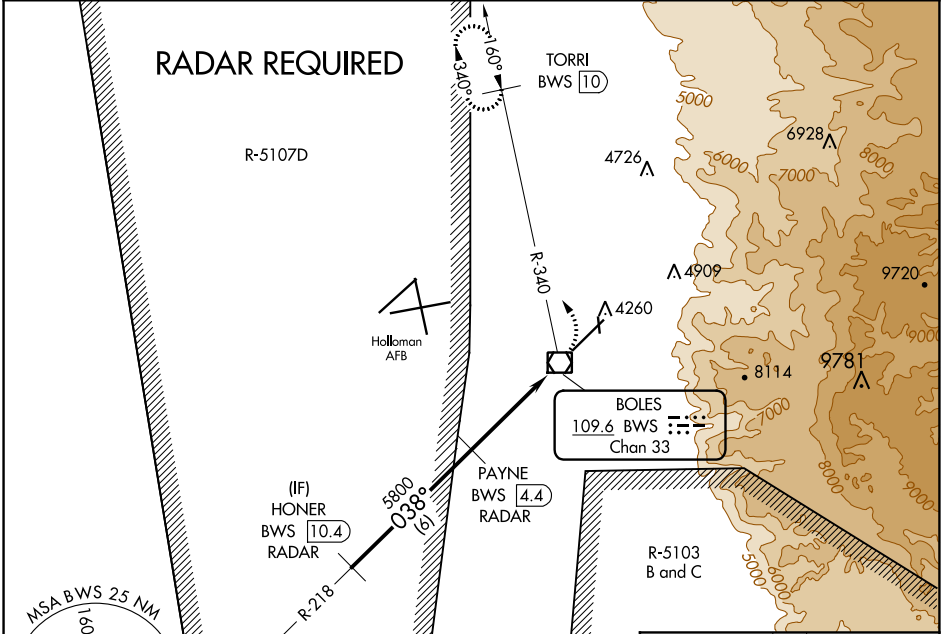
VOR RWY 4

ALAMOGORDO-WHITE SANDS RGNL (A.I.M)

⚠ Circling NA to Rwys 17 and 35. Circling NA southeast of Rwy 4-22. DME required. Civil aircraft require ATC clearance prior to entering Restricted Area 5107D. Procedure NA when Holloman Approach Control closed.

⚠ MISSED APPROACH: Climb to 4600 then climbing left turn to 6000 on BWS VOR/DME R-340 to TORRI/BWS 10 DME and hold.

AWOS-3 127.825	HOLLOMAN APP CON * 120.6 269.225	ALBUQUERQUE CENTER 132.65 257.6 (When tower closed)	UNICOM 122.8 (CTAF) 0
--------------------------	--	--	--



ELEV 4199	D	TDZE 4151
-----------	----------	-----------



CATEGORY	A	B	C	D
S-4		4500-1	349 (400-1)	
C CIRCLING	4680-1 481 (500-1)	4720-1 521 (600-1)	4860-1 3/4 661 (700-1 3/4)	5300-3 1101 (1200-3)

REIL Rwys 4 and 22
MRL Rwy 4-22 **0**
MRL Rwy 17/35

SW-1, 25 FEB 2021 to 25 MAR 2021

SW-1, 25 FEB 2021 to 25 MAR 2021