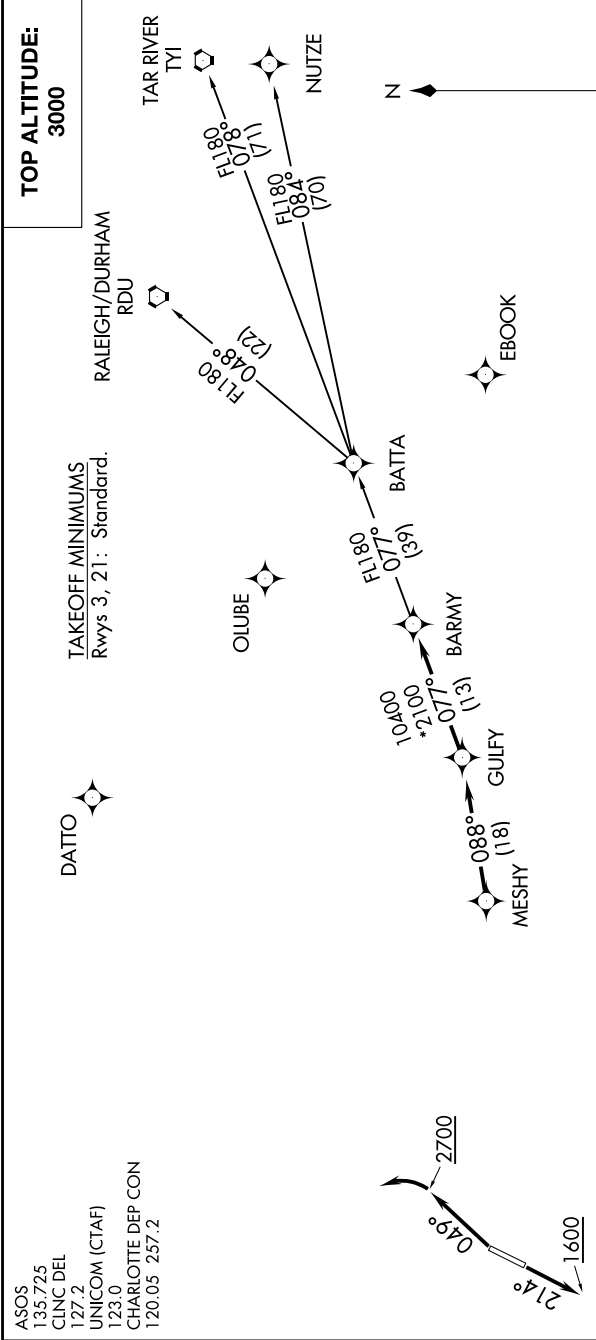


BARMY FOUR DEPARTURE (RNAV)

SE-2, 25 FEB 2021 to 25 MAR 2021



DEPARTURE ROUTE DESCRIPTION

TAKEOFF RWY 3: Climb heading 049° to 2700 before turning left.

TAKEOFF RWY 21: Climb heading 214° to 1600 before proceeding north.

Climb on heading assigned by ATC, expect RADAR vectors to MESHY, then on depicted route to BARMY. Then on assigned transition. Maintain 3000, expect clearance to filed altitude within 10 minutes after departure.

- NUTZE TRANSITION (BARMY4.NUTZE)
- RALEIGH/DURHAM TRANSITION (BARMY4.RDU)
- TAR RIVER TRANSITION (BARMY4.TYI)

NOTE: For turbojets only.

NOTE: DME/DME/IRU or GPS required.

NOTE: RNAV 1.

NOTE: RADAR required.

NOTE: If unable to accept climb rates, advise ATC on initial contact.

NOTE: Transponder code will be issued via PDC or Charlotte CLNC DEL.

NOTE: Upon reaching 10000 MSL, accelerate to and maintain 280K, if unable advise ATC.

NOTE: Chart not to scale.

BARMY FOUR DEPARTURE (RNAV)

SE-2, 25 FEB 2021 to 25 MAR 2021