

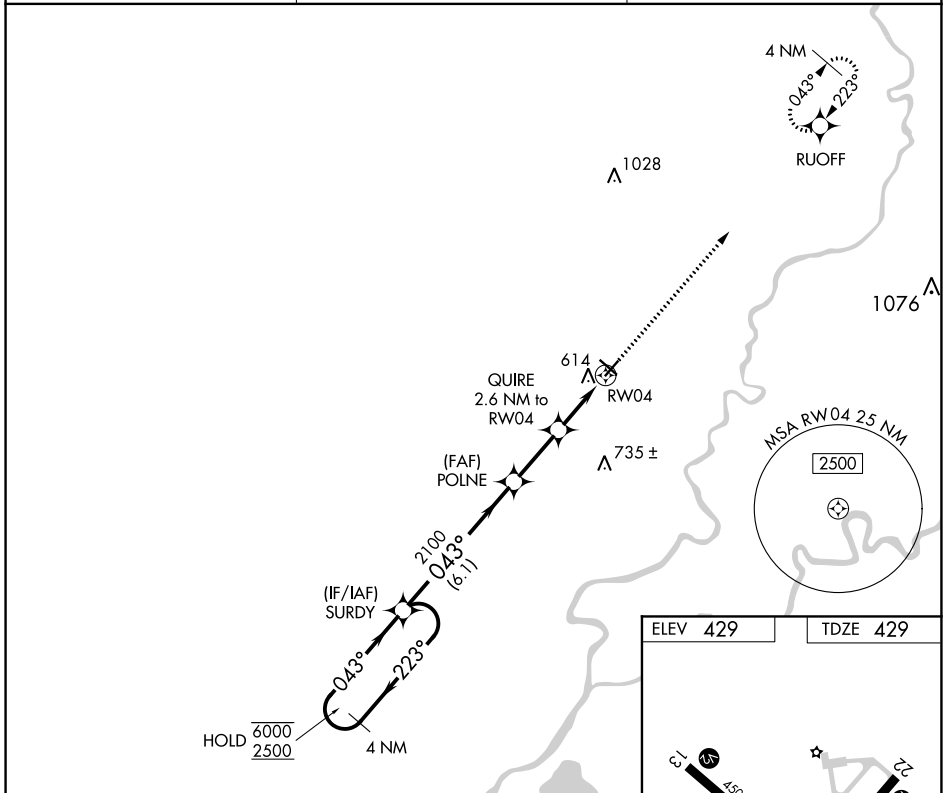
APP CRS	Rwy Idg	4000
043°	TDZE	429
	Apt Elev	429

RNAV (GPS) RWY 4

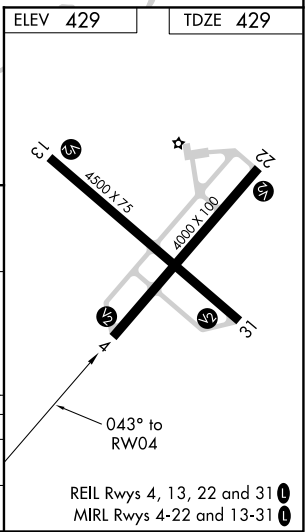
MOUNT CARMEL MUNI (AJG)

RNP APCH.	MISSED APPROACH: Climb to 2500 direct RUOFF and hold.
▼ Rwy 4 helicopter visibility reduction below 3/4 SM NA. For uncompensated Baro-VNAV systems, LNAV/VNAV NA below -15°C or above 54°C.	

AWOS-3 134.9	EVANSVILLE APP CON★ 125.6 343.7	UNICOM 122.7 (CTAF) 0
------------------------	---	--



4 NM Holding Pattern	SURDY	VGSI and RNAV glidepath not coincident (VGSI Angle 3.00/TCH 23).		2500	RUOFF
6000 ← 223°	← 043° →	POLNE	QUIRE	↑	✦
2500	043°	2100	2.6 NM to RW04	*LNAV only	
GP 3.00°			*1.5 NM to RW04		
TCH 40		2100			
		*1300			
		← 6.1 NM →	← 2.5 NM →	← 1.1 NM →	← 1.5 NM →
CATEGORY	A	B	C	D	
LNAV/VNAV	DA	937-1 3/4	508 (600-1 3/4)	NA	
LNAV MDA		920-1	491 (500-1)	920-1 1/4	491 (500-1 3/4)



EC-3, 25 FEB 2021 to 25 MAR 2021

EC-3, 25 FEB 2021 to 25 MAR 2021