

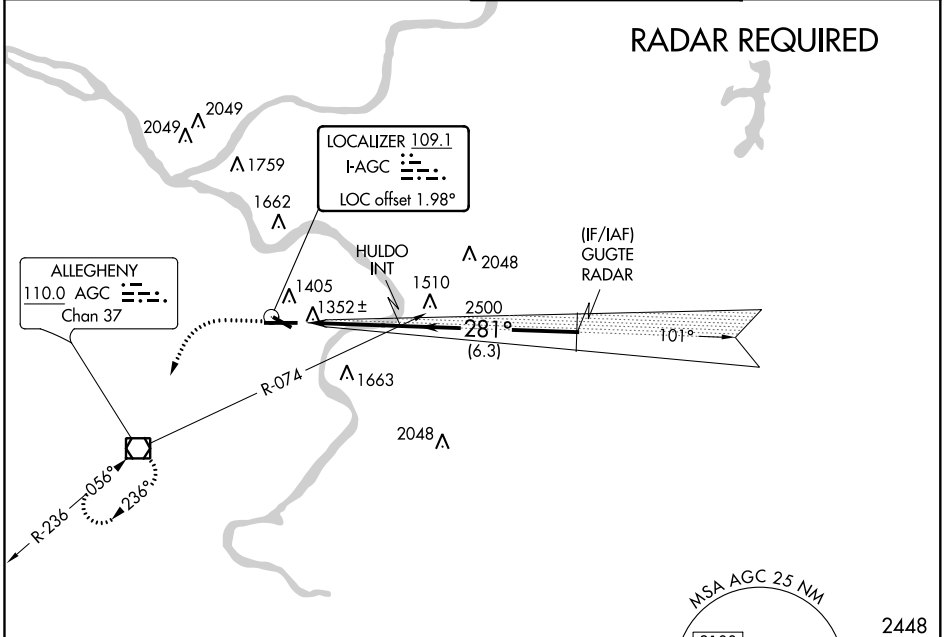
LOC I-AGC 109.1	APP CRS 281°	Rwy ldg TDZE Apt Elev	6501 1251 1252
---------------------------	------------------------	-----------------------------	---

ILS or LOC RWY 28

ALLEGHENY COUNTY (AGC)

For inoperative MALS, increase S-LOC Cats C and D visibility to RVR 6000.		MALS 	MISSED APPROACH: Climb to 2000 then climbing left turn to 3000 direct AGC VOR/DME and hold.
---	--	----------	---

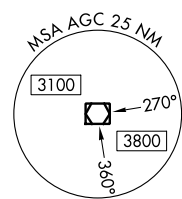
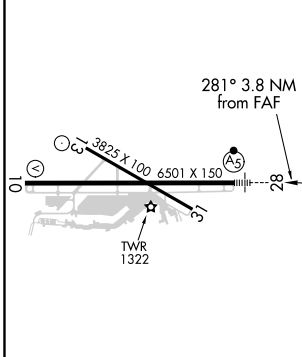
ATIS 120.55	PITTSBURGH APP CON 119.35 285.575	ALLEGHENY TOWER 121.1 239.0	GND CON 121.7
-----------------------	---	---------------------------------------	-------------------------



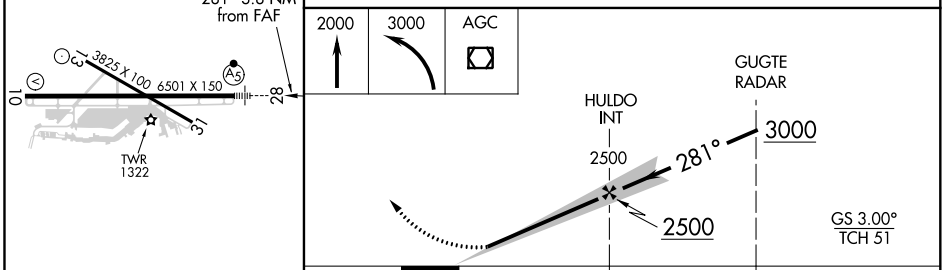
NE-4, 25 FEB 2021 to 25 MAR 2021

NE-4, 25 FEB 2021 to 25 MAR 2021

ELEV 1252	TDZE 1251
-----------	-----------



2448



REIL Rwy 10, 13, and 31					
HIRL Rwy 10-28 and 13-31					
FAF to MAP 3.8 NM					
Knots	60	90	120	150	180
Min:Sec	3:48	2:32	1:54	1:31	1:16
CIRCLING	1720-1	468 (500-1)	728 (800-2)	1980-2	1980-2 1/4
S-ILS 28	1501/24 250 (300-1/2)				
S-LOC 28	1660/24	409 (500-1/2)	1660/40	409 (500-3/4)	
CATEGORY	A	B	C	D	