

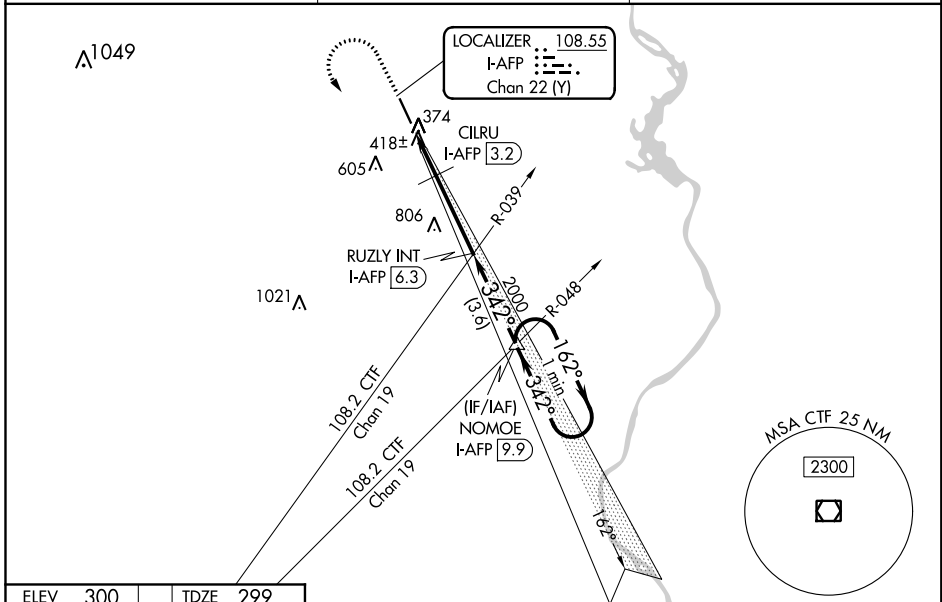
LOC/DME I-AFP 108.55 Chan 22(Y)	APP CRS 342°	Rwy Idg TDZE Apt Elev	5498 299 300
--	------------------------	-----------------------------	---

ILS or LOC RWY 34

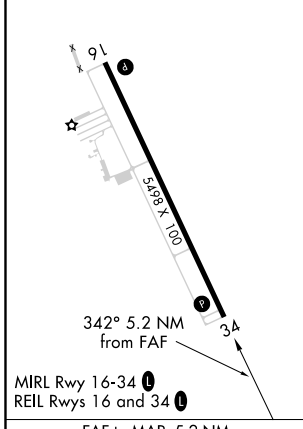
ANSON COUNTY-JEFF CLOUD FIELD (A/FP)

RNP APCH.
▼ Rwy 34 helicopter visibility reduction below 3/4 SM NA. VDP NA when using Rockingham altimeter setting. When local altimeter setting not received, use Rockingham altimeter setting: increase S-ILS 34 DA to 607 and S-ILS 34 all Cats visibility 1/8 SM; increase all MDA 60 feet and S-LOC 34 Cats C/D visibility 1/8 SM and CILRU fix minimums S-LOC 34 Cats C/D visibility 1/4 SM.
▲ MISSED APPROACH: Climb to 1000 then climbing left turn to 3000 on heading 120° and on I-AFP S course (162°) to NOMOE INT/I-AFP 9.9 DME and hold.

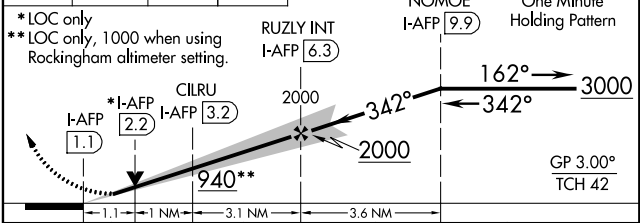
AWOS-3 119.325	CHARLOTTE APP CON 120.05 307.8	UNICOM 122.8 (CTAF) ①
--------------------------	--	---------------------------------



ELEV 300	TDZE 299
----------	----------



1000	3000	I-AFP S crs	NOMOE	VGSI and ILS glidepath not coincident (VGSI Angle 3.00/TCH 45).
↑	hdg 120°		△	



CATEGORY	A	B	C	D
S-ILS 34	558-7/8 259 (300-7/8)			
S-LOC 34	940-1 641 (700-1)	940-1 7/8 641 (700-1 7/8)		
CILRU FIX MINIMUMS				
S-LOC 34	680-1 381 (400-1)	680-1 1/8 381 (400-1 1/8)		

FAF to MAP 5.2 NM					
Knots	60	90	120	150	180
Min:Sec	5:12	3:28	2:36	2:05	1:44

SE-2, 25 FEB 2021 to 25 MAR 2021

SE-2, 25 FEB 2021 to 25 MAR 2021