

CAMP SPRINGS, MARYLAND

# TACAN RWY 19R

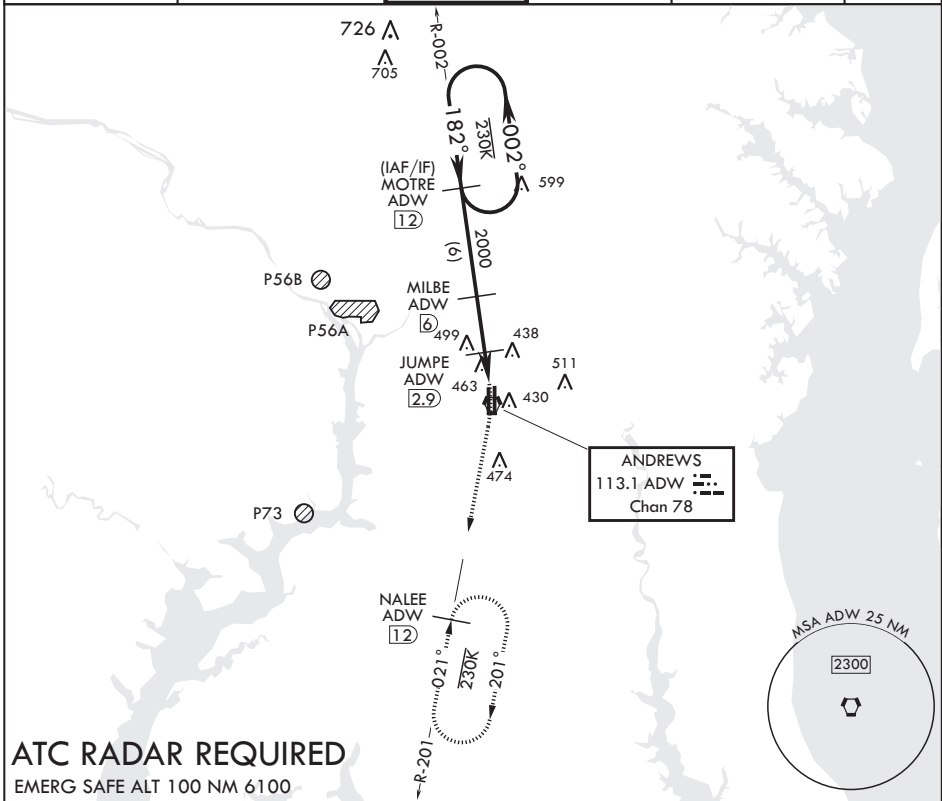
VORTAC ADW 113.1 Chan 78	APCH CRS 182°	Rwy ldg TDZE 274 Arpt Elev 280	9318
--------------------------------	------------------	---	------

AL-561 (USAF)

JOINT BASE ANDREWS (KADW)

**ALSIF-2** MISSED APPROACH: Climbing to 2500, intercept ADW VORTAC R-201 to NALEE and hold.  
 \* When ALS inop, increase CAT AB RVR to 55, vis to 1 mile, CAT CDE vis to 1 3/8 miles.  
 \*\* Circling not authorized W of Rwy 1L-19R.

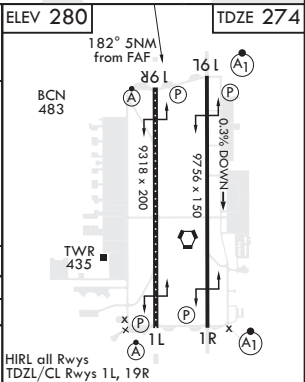
ATIS 133.675 251.05	POTOMAC APP CON 128.0 335.5	TOWER 118.4 349.0	GND CON 121.8 275.8	CLNC DEL 127.55 285.475	CPDLC
------------------------	--------------------------------	----------------------	------------------------	----------------------------	-------



**ATC RADAR REQUIRED**

EMERG SAFE ALT 100 NM 6100

MOTRE R-002 (12)	MILBE (6)	JUMPE (2.9)	BIMKE (1.2)	VORTAC	2500 ADW R-201	NALEE ADW (12)	ELEV 280	TDZE 274
2500	2000	960						
← 002°	← 182°	← 182°						
† MILBE to MAP								
† 3.11° ≥ TCH 71								
		3.1 NM	1.7 NM	.2				
CATEGORY	A	B	C	D	E			
S-19R*	740/24	466 (500-1/2)	740/50	466	(500-1)			
CIRCLING**	780-1	501 (600-1)	780-1/2 501 (600-1/2)	840-2	561 (600-2)			



CAMP SPRINGS, MARYLAND

38°49'N - 76°52'W

JOINT BASE ANDREWS (KADW)

Amdt 1 02MAR17

# TACAN RWY 19R

NE-3, 25 FEB 2021 to 25 MAR 2021

NE-3, 25 FEB 2021 to 25 MAR 2021