

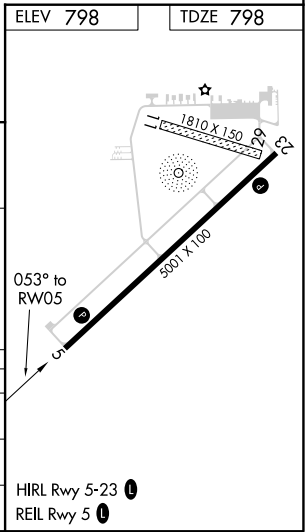
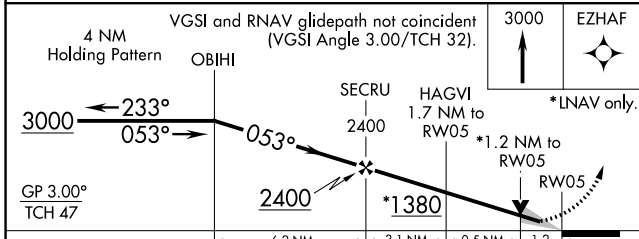
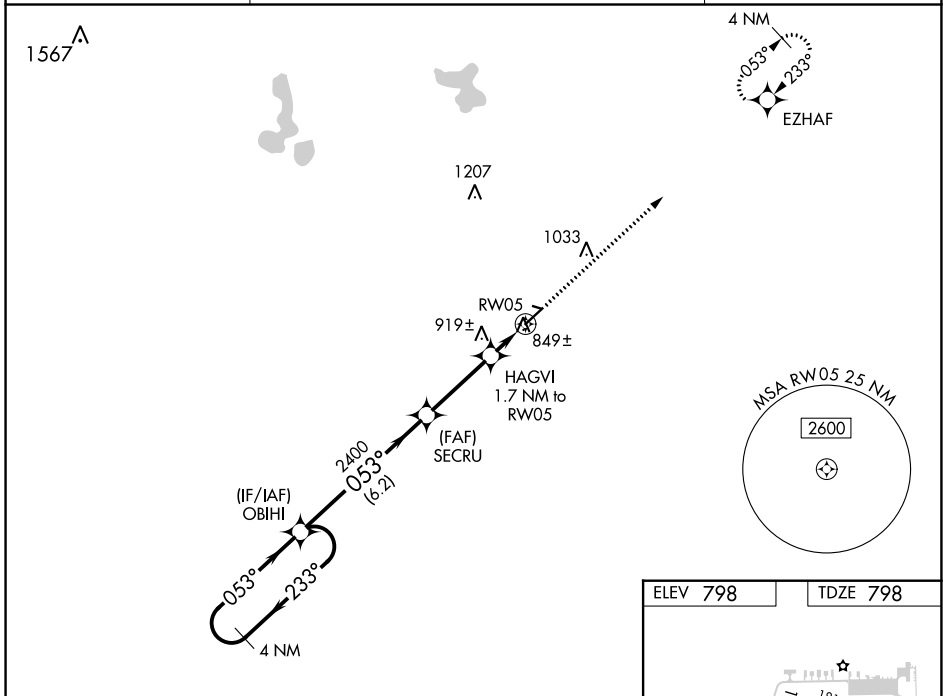
WAAS CH 42603	APP CRS 053°	Rwy Idg TDZE Apt Elev	5001 798 798
-------------------------	------------------------	-----------------------------	---

RNAV (GPS) RWY 5

LENAWEE COUNTY (ADG)

RNP APCH.	<p>⚠ For uncompensated Baro-VNAV systems, LNAV/VNAV NA below -16°C or above 54°C.</p> <p>⚠ When local altimeter setting not received, use Ann Arbor Muni altimeter setting; increase LPV all Cats DA to 1114 feet and all visibilities 1/8 SM; increase LNAV/VNAV all Cats DA to 1185 feet; increase all MDA 80 feet and visibility LNAV Cats C/D 1/4 SM. Baro-VNAV and VDP NA when using Ann Arbor Muni altimeter setting.</p>	MISSED APPROACH: Climb to 3000 direct EZHAF and hold.
-----------	---	---

ASOS 118.375	TOLEDO APP CON 134.35 317.55	UNICOM 122.8 (CTAF)
------------------------	--	-------------------------------



CATEGORY	A	B	C	D
LPV DA	1048-3/4		250 (300-3/4)	
LNAV/VNAV DA	1119-1 1/4		321 (400-1 1/4)	
LNAV MDA	1200-1 402 (500-1)		1200-1 1/4 402 (500-1 1/4)	

EC-1, 25 FEB 2021 to 25 MAR 2021

EC-1, 25 FEB 2021 to 25 MAR 2021