

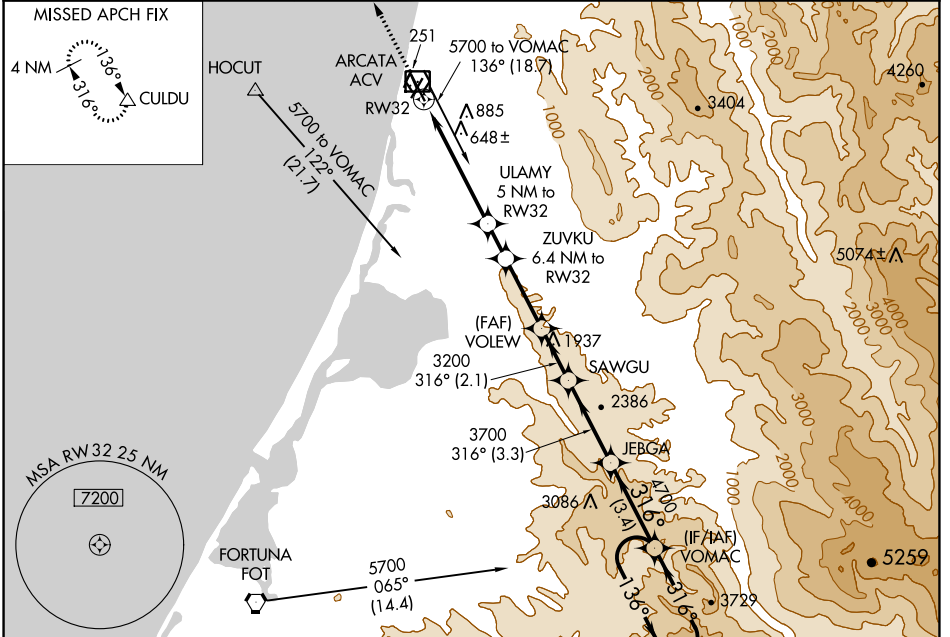
WAAS CH 63108 W32A	APP CRS 316°	Rwy Idg TDZE Apt Elev	5846 221 222
--	------------------------	-----------------------------	---

RNAV (GPS) RWY 32

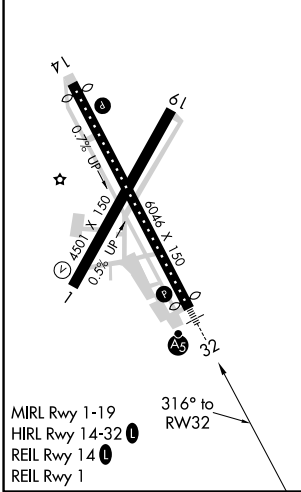
CALIFORNIA REDWOOD COAST-HUMBOLDT COUNTY (ACV)

<p>Baro-VNAV NA. Circling NA northeast of Rwy 14-32. DME/DME RNP-0.3 NA.</p>	<p>MALS R AS</p> <p>MISSED APPROACH: Climb to 3000 direct CULDU and hold.</p>
---	---

<p>ASOS 118.525</p>	<p>SEATTLE CENTER 124.85 306.3</p>	<p>UNICOM 123.0 (CTAF)</p>
---------------------------------------	--	--



ELEV 222	D	TDZE 221
----------	----------	----------



3000 CULDU	VGS1 and RNAV glidepath not coincident (VGS1 Angle 3.00/TCH 43).			
	ZUVKU	VOLEW	SAWGU	VOMAC
*LNAV only.	ULAMY 6.4 NM to RW32	3200		JEBGA 5 NM Holding Pattern
*2 NM to RW32	5 NM to RW32	3700	4700	GP 3.00° TCH 47
	1860*	2300*	3200	
	2 NM	3 NM	1.4 NM	2.8 NM
			2.1 NM	3.3 NM
				3.4 NM
CATEGORY	A	B	C	D
LPV DA	441/18		220 (300-½)	
LNAV/VNAV DA	1056-2½		835 (900-2½)	
LNAV MDA	900/24 679 (700-½)	900/40 679 (700-¾)	900-1½	679 (700-1½)
C CIRCLING	900-1 678 (700-1)		900-2 678 (700-2)	900-2¼ 678 (700-2¼)

SW-2, 25 FEB 2021 to 25 MAR 2021

SW-2, 25 FEB 2021 to 25 MAR 2021