

ACK VOR/DME <b>116.2</b> Chan <b>109</b>	APP CRS <b>240°</b>	Rwy Idg <b>6303</b> TDZE <b>48</b> Apt Elev <b>48</b>
--	------------------------	---

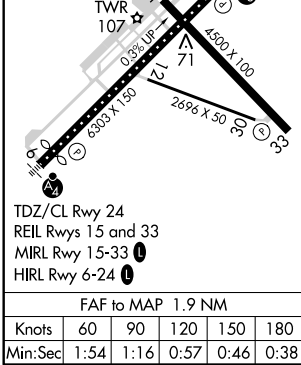
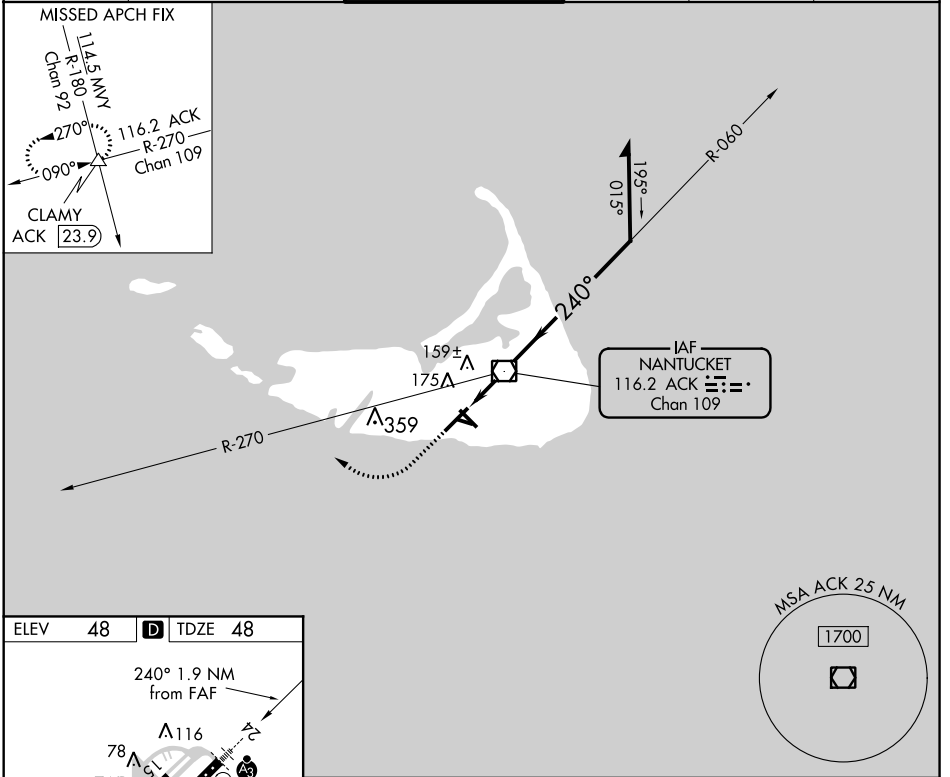
# VOR RWY 24

NANTUCKET MEMORIAL (ACK)

**⚠** When local altimeter setting not received, use Hyannis altimeter setting and increase all MDA 80 feet; increase S-24 Cat C visibility to RVR 4000; increase Circling Cats C/D visibility ¼ SM. VDP NA when using Hyannis altimeter setting. For Inoperative SSALR, increase S-24 Cat D visibility to RVR 6000.

**SSALR** MISSED APPROACH: Climb to 700 then climbing right turn to 2500 via heading 310° and ACK VOR/DME R-270 to CLAMY INT/ACK 23.9 DME and hold.

ATIS <b>127.5</b>	BOSTON APP CON★ <b>126.1 318.1</b>	NANTUCKET TOWER ★ <b>118.3 (CTAF) 0</b>	GND CON <b>132.5</b>	CLNC DEL <b>119.375</b>	UNICOM <b>122.95</b>
----------------------	---------------------------------------	--	-------------------------	----------------------------	-------------------------



ELEV 48	TDZE 48	700		2500	CLAMY	ACK VOR/DME	Remain within 10 NM
		hdg 310°		ACK R-270	ACK 0.9	6000	060°
		ACK 1.9		ACK 0.9	3.47° TCH 48	800	240°
		1 NM		0.9 NM	VGSI and descent angles not coincident (VGSI Angle 3.00/TCH 48).		
CATEGORY	A	B	C	D			
S-24	440/24 393 (400-½)			440/50 393 (400-1)			
CIRCLING	480-1 433 (500-1)	500-1 453 (500-1)	720-2 673 (700-2)	720-2½ 673 (700-2½)			

NE-1, 25 FEB 2021 to 25 MAR 2021

NE-1, 25 FEB 2021 to 25 MAR 2021