

WAAS CH <b>97415</b> <b>W35A</b>	APP CRS <b>347°</b>	Rwy Idg <b>5219</b> TDZE <b>196</b> Apt Elev <b>196</b>
--	------------------------	---

# RNAV (GPS) RWY 35

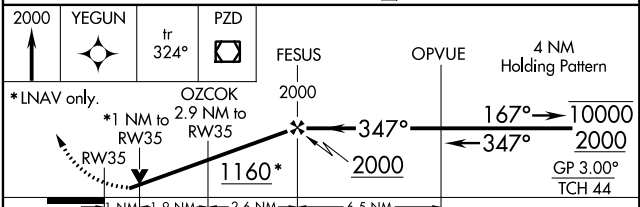
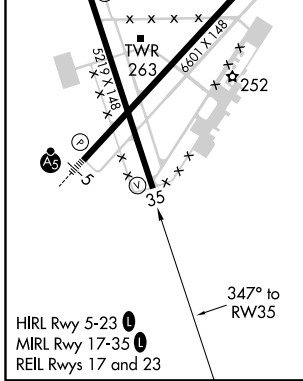
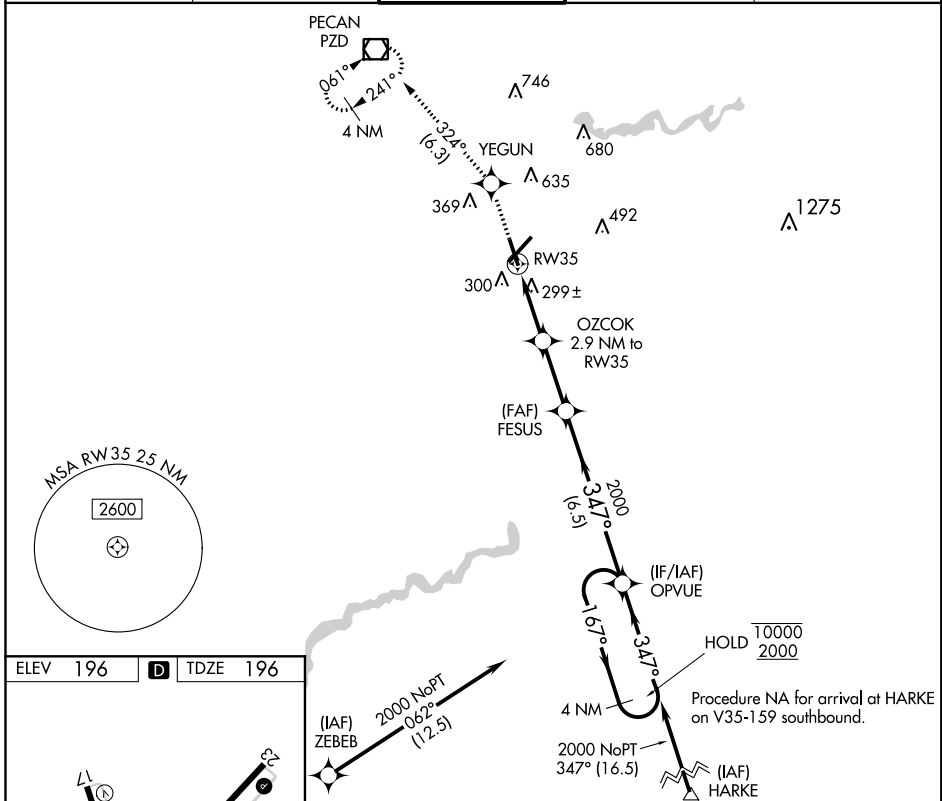
SOUTHWEST GEORGIA RGNL (ABY)

RNP APCH.

▼ For uncompensated Baro-VNAV systems, LNAV/VNAV NA below -7°C or above 54°C. Rwy 34 helicopter visibility reduction below ¼ SM NA.

MISSED APPROACH: Climb to 2000 direct YEGUN and on track 324° to PZD VOR/DME and hold.

ATIS <b>133.05</b>	JACKSONVILLE CENTER <b>125.75 226.8</b>	ALBANY TOWER * <b>120.25 (CTAF) 0336.4</b>	GND CON <b>121.9 348.6</b>	UNICOM <b>122.95</b>
-----------------------	--	---	-------------------------------	-------------------------



CATEGORY	A	B	C	D
LPV DA		495-1	299 (300-1)	
LNAV/VNAV DA		475-1	279 (300-1)	
LNAV MDA		560-1	364 (400-1)	
<b>C</b> CIRCLING	640-1 444 (500-1)	660-1 464 (500-1)	940-2¼ 744 (800-2¼)	940-2½ 744 (800-2½)

SE-4, 25 FEB 2021 to 25 MAR 2021

SE-4, 25 FEB 2021 to 25 MAR 2021